



On this short walk, you will follow a series of footpaths to Shark Bay and head up some sandstone steps to the great views of Shakespheres Point. Since you are up on this headland, it is worth doing a loop around before heading back down to the main area of Nielsen Park. Make a day of it by staying for a swim and a bite to eat.

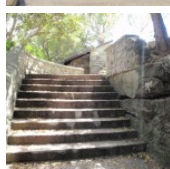
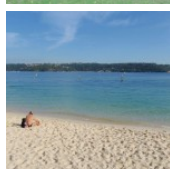
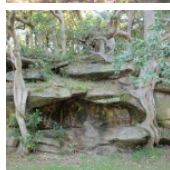
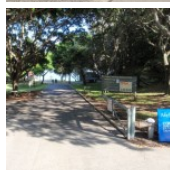
Sydney Harbour National Park

Length: 0.7 km
Time: 15 mins
Climb: 24 m
Style: Circuit
Rating: Walk: Easy
Where: 2.2 km NW of Vaucluse
Transport: bus car



Visit www.wildwalks.com for more info

Side trips and Alternate routes mentioned in these notes are not included in the tracks overall rating, distance or time estimate. The notes only describe the side trips and Alternate routes in one direction. Allow extra time for resting and exploring areas of interest. Please ensure you and your group are well prepared and equipped for all possible hazards and delays. The authors, staff and owners of wildwalks take care in preparing these notes but will not accept responsibility for any inconvenience, loss or injury sustained by using these notes or maps. Please take care and share your experience through the website. Please check park closures, weather information and Fire Danger Rating just before leaving for your walk. Walk maybe closed during Total Fire Ban. GPS for start and end of this walk: -33.8508,151.2686



Wildwalks

Download the free [Bushwalk Australia eMag](http://bushwalk.com.au)

The eMagazine is produced by the community at bushwalk.com and the Wildwalks team

[Bushwalk.com](http://bushwalk.com) Australia's most active bushwalking forum - Check it out.

Happy Reading. Matt :)

Greycliffe Ave Car Park to Mid Nielsen Park Int 0.1km 1 mins

(From S) From the lower end of the car park on Greycliffe Ave, this walk heads around the gate and along the sealed path (driveway) towards the water, passing the 'Sydney Harbour National Park' sign. After ~50m, the path leads to a four-way intersection just past the garbage bins.

Mid Nielsen Park Int to Nielsen Park Cafe 0.1km 2 mins Optional Side Trip:

(From 0.07 km) Continue straight: From the intersection, this walk heads towards the water following the wide path. The path soon bends left (near the toilet block, on the right) and heads behind the beach, past the large information sign. Soon the path heads over the 'Dressing Pavilion' tunnel and, ~50m later, comes to the front of the Nielsen Park Cafe with its great water views.

(Retrace your steps back to the main track, then turn left to continue along this walk.)

Shark Bay

Located at the northern end of Nielsen Park, this beach faces north across Sydney Harbour. The sandy beach offers a swimming net enclosure, public toilets and change rooms, showers and is a popular place for people to simply relax. The beach is a focal point of Nielsen Park and also boasts a cafe. Protected by the harbour, there is no surf at this beach. The beach is not patrolled. This is a lovely spot, with natural shade not far from the beach.

Nielsen Park Cafe

Open 8-5 daily, this historic cafe offers inside seating and a range of meals, including breakfast, sandwiches and hot food. This is one of a number of buildings in Nielsen Park which are available for functions. For further enquiries, contact 9337 1574. [More info](#)

Mid Nielsen Park Int to Shakespheres Point int 0.1km 1 mins

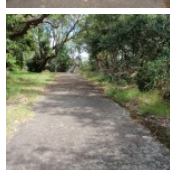
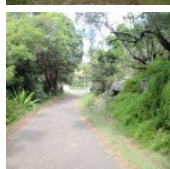
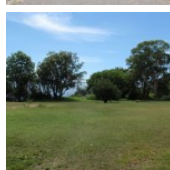
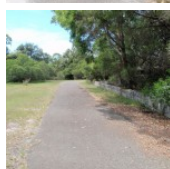
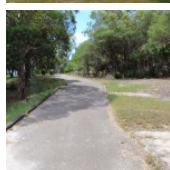
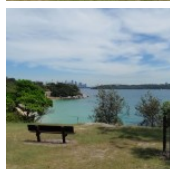
(From 0.07 km) Turn right: From the intersection, this walk heads along the path, past the bins and towards the staircase (keeping the water to your left). The walk heads up the sandstone staircase, passing the female toilet block along the way, to a three-way intersection near a grassy clearing and Shakespheres Point.

Shakespheres Point int to Bottle and Glass Clearing 0.1km 3 mins

(From 0.12 km) Veer left: From the intersection, this walk follows the sealed path around the side of the hill, keeping the water and grassy clearing to your left. Soon the path leads through a grove of trees and past a group of garbage bins before coming to another grassy clearing with some bench seats and views - this is Bottle and Glass clearing.

Bottle and Glass Clearing to Roundabout gate 0.2km 3 mins

(From 0.26 km) Continue straight: From the clearing, this walk heads away from the garbage bins, following the sealed path as it bends right (keeping the water to your left). The path heads gently downhill past the back of some houses and comes to an intersection and locked gate (near the intersection of Greycliffe Ave and Coolong Rd).



Roundabout gate to Greycliffe Ave Car Park 0.2km 4 mins

(From 0.44 km) Turn right: From the intersection, this walk heads up the steeper path away from the gate (initially keeping the 'Sydney Harbour National Park - Nielsen Park' sign to your right). The path heads up a short, but moderately steep section and soon flattens out, wandering through a grassy clearing. As the path comes into view of the water, it leads to a three-way intersection (with steps on the left) just before Shakespheres Point.

Turn left : From the intersection, this walk heads down the stairs. The steps lead past the female toilet block and continues down to the open parkland area of Nielsen Park. The walk continues past the bin to a four-way intersection.

Turn left: From the intersection, this walk follows the wide sealed path (driveway) directly away from the water, past the garbage bins. The path soon leads past the 'Sydney Harbour National Park' sign and through the gate to Greycliffe Ave.

A list of paper topographical maps that cover this walk

[Sydney Heads](#) 1:25 000 Map Series

Sydney 1:100 000 Map Series

Nearby outdoor and camping stores

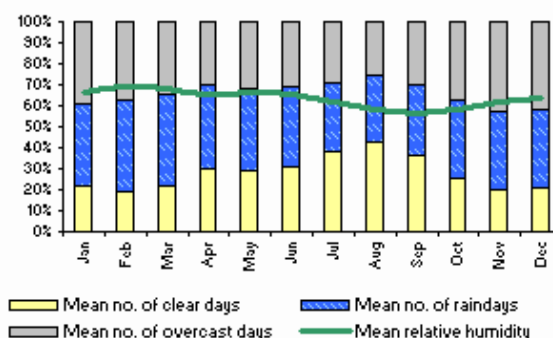
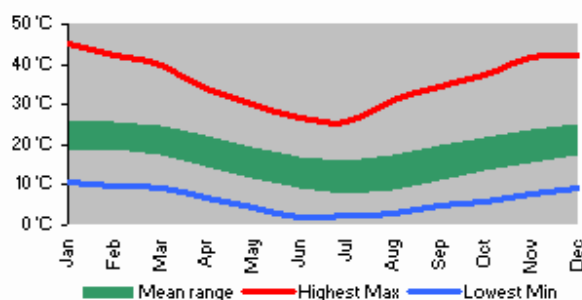
Outdoor Equipment 60 Spring St Bondi Junction (02) 9389 8122

Inski 46 York St Sydney (02) 9233 3200

Mitchells Adventure 81 York St Sydney (02) 9299 6321

Venus Repair Workshop Suite 36a 104 Bathurst St Sydney (02) 9267 0706

Wildsports Upper Floor 447 Kent St Sydney (02) 9264 2095



This space is available for advertising



Full colour
Great photos



Give the joy of walking to a friend
(and support wildwalks)

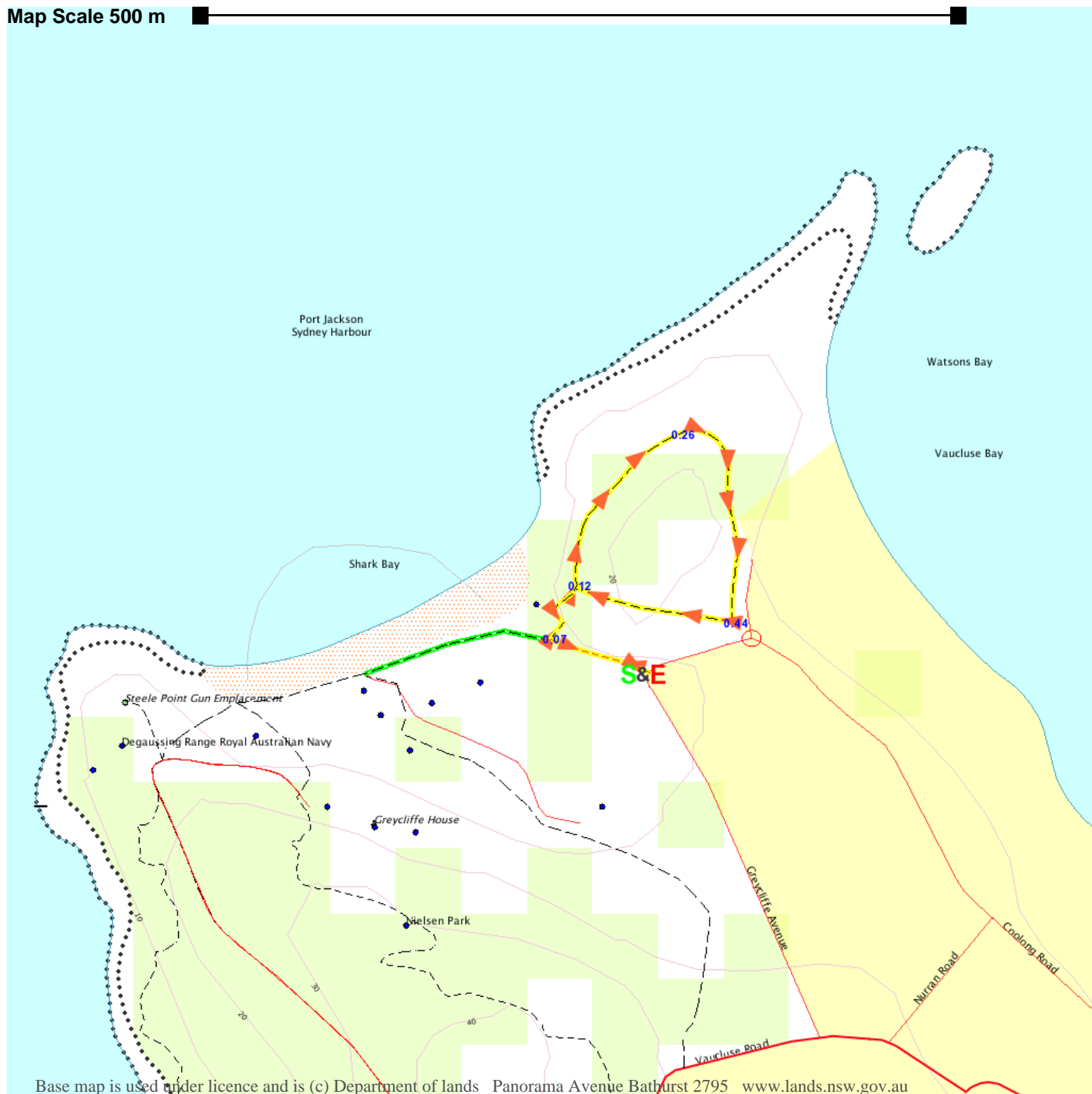
www.wildwalks.com/books.html



A walk for every body



Map Scale 500 m



Base map is used under licence and is (c) Department of lands Panorama Avenue Bathurst 2795 www.lands.nsw.gov.au

