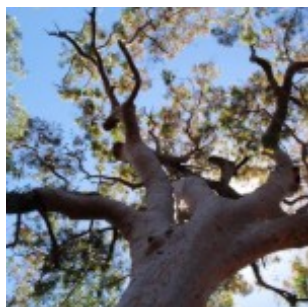


# Warri Warri Track (via Warriwarri Lookout)

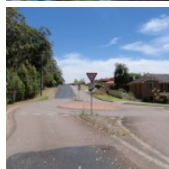


Starting on Bembooka Rd in Erina, this walk heads up the narrow Warri Warri track to Honeman's picnic area. You will visit the overgrown Warriwarri Lookout about halfway along this walk, but do not expect grand views! From the lookout, the walk follows wider trails along the much flatter ridge top to the popular Honeman's Lookout.

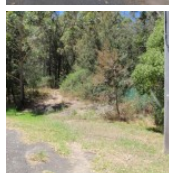
**Length:** 1.5 km  
**Time:** 45 mins  
**Climb:** 147 m  
**Style:** One way  
**Rating:** Track: Hard  
**Where:** 4.8 km NW of Kincumber  
**Transport:** bus car



Visit [www.wildwalks.com](http://www.wildwalks.com) for more info



*Side trips and Alternate routes mentioned in these notes are not included in the tracks overall rating, distance or time estimate. The notes only describe the side trips and Alternate routes in one direction. Allow extra time for resting and exploring areas of interest. Please ensure you and your group are well prepared and equipped for all possible hazards and delays. The authors, staff and owners of wildwalks take care in preparing these notes but will not accept responsibility for any inconvenience, loss or injury sustained by using these notes or maps. Please take care and share your experience through the website. Please check park closures, weather information and Fire Danger Rating just before leaving for your walk. Walk maybe closed during Total Fire Ban. GPS for start the start of this walk:-33.4492,151.3851 & for the end:-33.4591,151.3918*

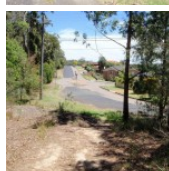


## Wildwalks

Download the free [Bushwalk Australia eMag](http://bushwalk.com)

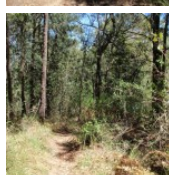
The eMagazine is produced by the community at [bushwalk.com](http://bushwalk.com) and the Wildwalks team  
[Bushwalk.com](http://bushwalk.com) Australia's most active bushwalking forum - Check it out.

Happy Reading. Matt :)



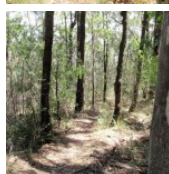
## Start of Bembooka Rd to Warriwarri Lookout 0.7km 15 mins

(From S) From opposite number 2 Bembooka Rd, Green Point (just downhill from the roundabout), this walk leaves the road and follows the track into the bush, with a fence on the right. The track soon leaves the fence (and ignores a track to the right) and heads up the hill. The track follows the ridge, getting steeper as it gets higher. As the track nears the rocks, it zigzags a little, working its way up, then a short distance later comes to a clearing, bench seat and the signposted 'Warriwarri Lookout' sign.



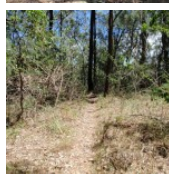
## Warriwarri Lookout

Warriwarri Lookout is an overgrown and signposted lookout in the middle of Kincumber Mountain Reserve. There is a fairly large clearing and a bench seat. There are slightly better views north, past the sign at the unfenced rock outcrop. The filtered views look north-east. The view from the lookout is overgrown, so do not expect much in the way of views.



## Warriwarri Lookout to Int of Sid Pulsford Walking and Warriwarri Lookout trails 0.3km 5 mins

(From 0.72 km) Veer right: From the lookout, this walk heads away from the 'Warriwarri Lookout' sign up the small rise, past the bench seat and along the wide sandy trail. Following the now flat, sandy trail through the bush, the walk passes an informal track (on the left) and comes to a three-way intersection and a 'Warriwarri Lookout' sign pointing back along the trail.



## Int of Sid Pulsford Walking and Warriwarri Lookout trails to Northern end of picnic area 0.3km 5 mins

(From 1.01 km) Continue straight: From the intersection, this walk heads south, away from the face of the two signs (following neither arrow). The walk passes a large angophora and comes to an intersection with a link track (on the left). Continue straight: From the intersection, this walk follows the wide trail south, gently uphill, keeping the wide valley on the right. The walk follows the sandy trail as it gently winds through the wooded forest and soon heads around a locked gate, coming to a large 'Sid Pulsford Walking Trail' sign at the northern end of the large grassy picnic area.



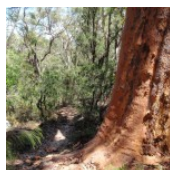
## Northern end of picnic area to Mudbrick building car park 0.2km 3 mins

(From 1.3 km) Continue straight: From here, this walk heads directly across the picnic area to the buildings on the far side. After passing the toilet block, the walk follows the path around the mud brick building to a small car park on the other side.



## Honeman's Rock picnic area

Honeman's Rock picnic area is a large picnic area at the top end of Island View Drive. This picnic area has a couple of large grassy areas, composting toilets, free electric BBQs, picnic tables, shelters, garbage bins, drinking water and information signs. The picnic area is home to a mud brick building (available for hire) and Honeman's Rock, from which the area derives its name. There is a fair amount of parking available next the picnic area, and some extra spaces a few hundred meters down the road.



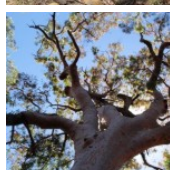
## Mud Brick Building

The mud brick building is a landmark in the main picnic area at Kincumber Mountain, and is a popular spot to gather. Also known as 'Kincumber Mountain Information Centre', 'The Kiosk', 'Kincumber Kiosk' and 'Kincumber Mountain Kiosk', the building was constructed in 1986 with funding from Community Employment Programme. The building is generally locked but can be booked through the local Lions Club for special events. The building has a rain water tank, small kitchen and one main large room. The verandah also provides good shelter.



## Honeman's Rock

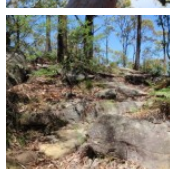
Honeman's Rock (aka Honeyman's Rock) is a large rock outcrop in front of the mud brick building, in the Honeman's Rock Picnic area. The exposed section of rock is 60m long and about 30m wide, with the western side having a significant unfenced drop. The rock is named after Cecil Lyle Honeman who became a lease holder on the mountain in 1962. The rock has a large depression that once filled with water, and a drain has been dug to keep the pool empty and clear of rubbish.



## A list of paper topographical maps that cover this walk

[Gosford 1:25 000 Map Series](#)

[Gosford 1:100 000 Map Series](#)



## Nearby outdoor and camping stores

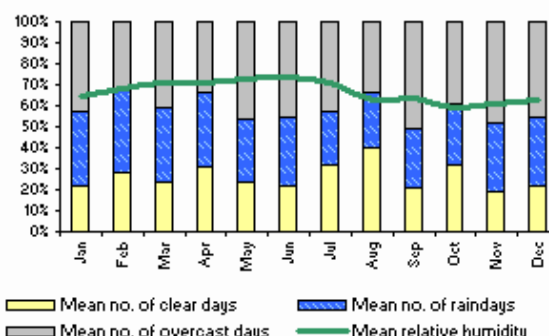
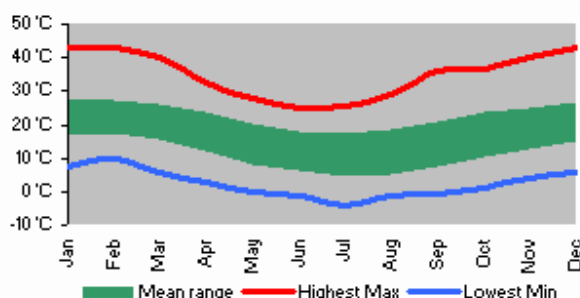
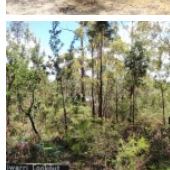
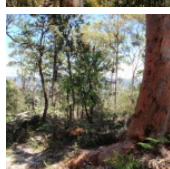
**Boots Great Outdoors** 201 The Entrance Rd Erina (02) 4367 0396

**Mannings Sports** 172 Mann St Gosford (02) 4325 1617

**Camping World Shop** 18, 482 Pacific Hwy Wyoming (02) 4324 6515

**BCF Australia Pty Ltd** 354 Manns Rd Gosford West (02) 4322 5833

**Kangaroo Tent City & BBQs** Homemakers Supa Centre Cnr Wyong Rd & Bryant Drv Tuggerah (02) 4353 4335



# Warri Warri Track (via Warriwarri Lookout)

This space is available for advertising

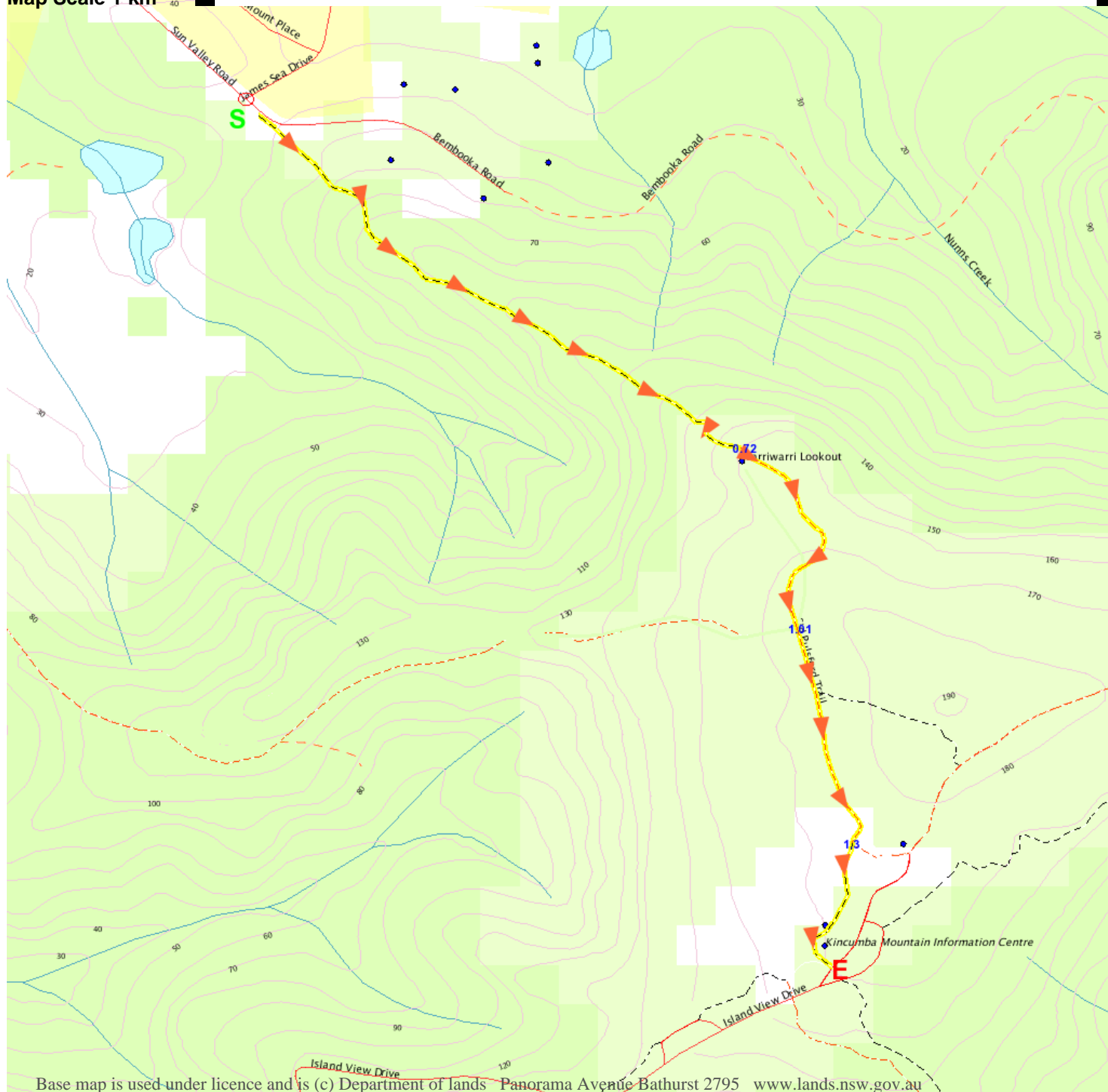
Full colour  
Great photos

Give the joy of walking to a friend  
(and support wildwalks)

[www.wildwalks.com/books.html](http://www.wildwalks.com/books.html)

A walk for every body

Map Scale 1 km



Base map is used under licence and is (c) Department of lands Panorama Avenue Bathurst 2795 [www.lands.nsw.gov.au](http://www.lands.nsw.gov.au)

