



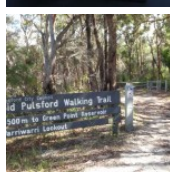
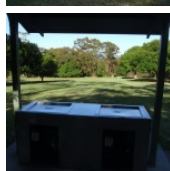
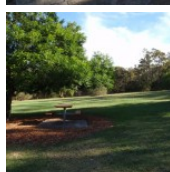
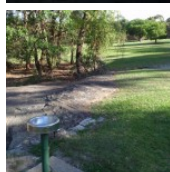
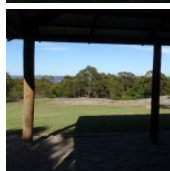
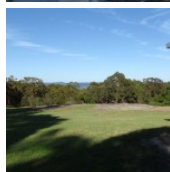
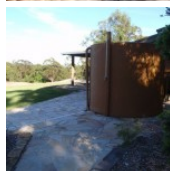
This short and fairly flat walk starts from the popular Honeman's picnic area and follows the Sid Pulsford Walking Track, then another trail to Warriwarri Lookout. The lookout is overgrown and provides no real view. A short distance beyond the signposted lookout is a rocky outcrop that provides some filtered views of the district. A nice walk through the dry ridge top forest, just don't expect grand views.

Length: 1.5 km
Time: 30 mins
Climb: 34 m
Style: Return
Rating: Walk: Easy
Where: 3.5 km NW of Kincumber
Transport: car



Visit www.wildwalks.com for more info

Side trips and Alternate routes mentioned in these notes are not included in the tracks overall rating, distance or time estimate. The notes only describe the side trips and Alternate routes in one direction. Allow extra time for resting and exploring areas of interest. Please ensure you and your group are well prepared and equipped for all possible hazards and delays. The authors, staff and owners of wildwalks take care in preparing these notes but will not accept responsibility for any inconvenience, loss or injury sustained by using these notes or maps. Please take care and share your experience through the website. Please check park closures, weather information and Fire Danger Rating just before leaving for your walk. Walk maybe closed during Total Fire Ban. GPS for start and end of this walk: -33.4591,151.3918



Wildwalks

Download the free Bushwalk Australia eMag

The eMagazine is produced by the community at bushwalk.com and the Wildwalks team
Bushwalk.com Australia's most active bushwalking forum - Check it out.

Happy Reading. Matt :)



Honeman's Rock picnic area

Honeman's Rock picnic area is a large picnic area at the top end of Island View Drive. This picnic area has a couple of large grassy areas, composting toilets, free electric BBQs, picnic tables, shelters, garbage bins, drinking water and information signs. The picnic area is home to a mud brick building (available for hire) and Honeman's Rock, from which the area derives its name. There is a fair amount of parking available next the picnic area, and some extra spaces a few hundred meters down the road.

Honeman's Rock

Honeman's Rock (aka Honeyman's Rock) is a large rock outcrop in front of the mud brick building, in the Honeman's Rock Picnic area. The exposed section of rock is 60m long and about 30m wide, with the western side having a significant unfenced drop. The rock is named after Cecil Lyle Honeman who became a lease holder on the mountain in 1962. The rock has a large depression that once filled with water, and a drain has been dug to keep the pool empty and clear of rubbish.

Mud Brick Building

The mud brick building is a landmark in the main picnic area at Kincumber Mountain, and is a popular spot to gather. Also known as 'Kincumber Mountain Information Centre', 'The Kiosk', 'Kincumber Kiosk' and 'Kincumber Mountain Kiosk', the building was constructed in 1986 with funding from Community Employment Programme. The building is generally locked but can be booked through the local Lions Club for special events. The building has a rain water tank, small kitchen and one main large room. The verandah also provides good shelter.

Mudbrick building car park to Northern end of picnic area 0.2km 3 mins

(From S) From the car park next to the mud brick building, this walk heads in front of the mud brick building and follows the path to the toilet block. Here, the walk heads across the grass between the picnic table (under the tree on the left) and the BBQ shelter (on the right) to the far end of the clearing, near another picnic table, to find the 'Sid Pulsford Walking Trail' sign.

Northern end of picnic area to Int of Sid Pulsford Walking and Warriwarri Lookout trails 0.3km 5 mins

(From 0.18 km) Continue straight: From the picnic area, this walk follows the 'Sid Pulsford Walking Trail' sign around the locked gate and away from the clearing. The walk gently winds through the bush along the wide sandy trail, and comes to an intersection with a link track (heading up to the right) just after a large angophora.

Continue straight: From the intersection, this walk follows the wide management trail north, past the large twisted angophora, coming to the 'Y' intersection marked by two signs (just visible from the previous intersection).

Int of Sid Pulsford Walking and Warriwarri Lookout trails to Warriwarri Lookout 0.3km 5 mins

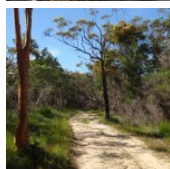
(From 0.48 km) Continue straight: From the intersection, this walk follows the 'Warriwarri Lookout' sign north along the wide sandy trail. The flat trail gently winds through the bush, passing an informal track (on the right) and soon coming to a small clearing, bench seat and signposted 'Warriwarri Lookout', which offers limited views.



Warriwarri Lookout

Warriwarri Lookout is an overgrown and signposted lookout in the middle of Kincumber Mountain Reserve. There is a fairly large clearing and a bench seat. There are slightly better views north, past the sign at the unfenced rock outcrop. The filtered views look north-east. The view from the lookout is overgrown, so do not expect much in the way of views.

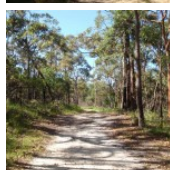
This is a 'Return' style walk - retrace your steps back to the beginning when you are ready.



A list of paper topographical maps that cover this walk

[Gosford](#) 1:25 000 Map Series

Gosford 1:100 000 Map Series



Nearby outdoor and camping stores

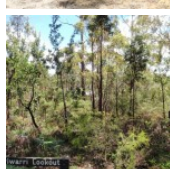
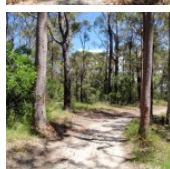
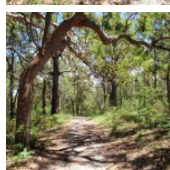
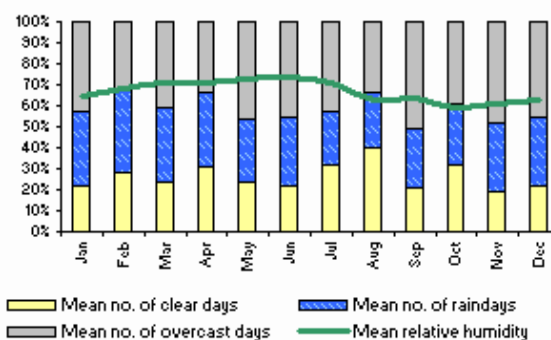
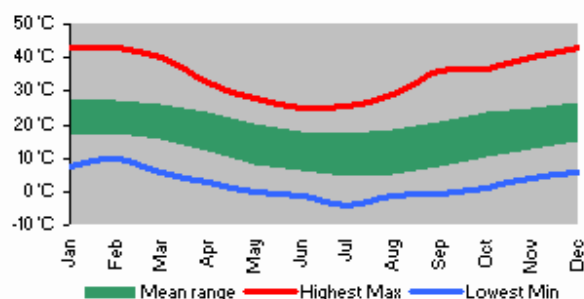
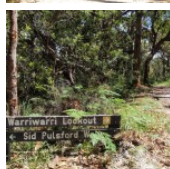
Boots Great Outdoors 201 The Entrance Rd Erina (02) 4367 0396

Mannings Sports 172 Mann St Gosford (02) 4325 1617

Camping World Shop 18, 482 Pacific Hwy Wyoming (02) 4324 6515

BCF Australia Pty Ltd 354 Manns Rd Gosford West (02) 4322 5833

Kangaroo Tent City & BBQs Homemakers Supa Centre Cnr Wyong Rd & Bryant Drv Tuggerah (02) 4353 4335



This space is available for advertising



Full colour
Great photos



Give the joy of walking to a friend
(and support wildwalks)

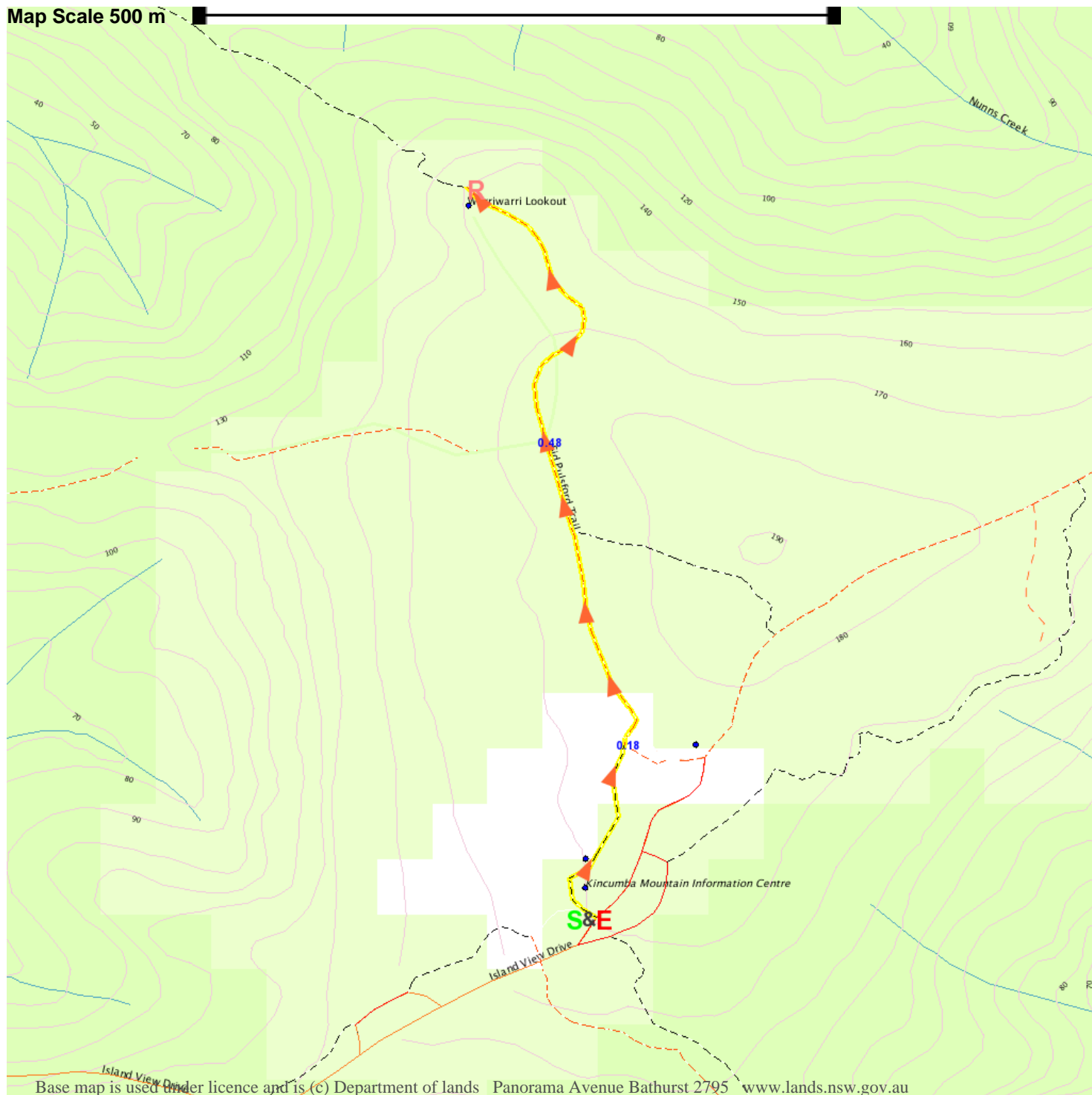
www.wildwalks.com/books.html



A walk for every body



Map Scale 500 m



Base map is used under licence and is (c) Department of lands Panorama Avenue Bathurst 2795 www.lands.nsw.gov.au

