



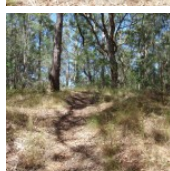
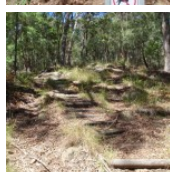
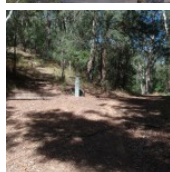
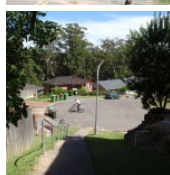
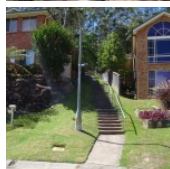
This walk starts from Terrigal suburbia and leads up through the dry bush to the wonderful views at Colin Watters Lookout. On the way, you pass some large boulders scattered with red gums and grass trees. At the top, you will be greeted with good views over Avoca, and a picnic table encouraging you to soak up the view.

Length: 2.2 km
Time: 1 hr 15 mins
Climb: 149 m
Style: Return
Rating: Track: Hard
Where: 2.5 km ESE of Erina
Transport: bus car



Visit www.wildwalks.com for more info

Side trips and Alternate routes mentioned in these notes are not included in the tracks overall rating, distance or time estimate. The notes only describe the side trips and Alternate routes in one direction. Allow extra time for resting and exploring areas of interest. Please ensure you and your group are well prepared and equipped for all possible hazards and delays. The authors, staff and owners of wildwalks take care in preparing these notes but will not accept responsibility for any inconvenience, loss or injury sustained by using these notes or maps. Please take care and share your experience through the website. Please check park closures, weather information and Fire Danger Rating just before leaving for your walk. Walk maybe closed during Total Fire Ban. GPS for start and end of this walk: -33.4447,151.4068



Wildwalks

Download the free Bushwalk Australia eMag

The eMagazine is produced by the community at bushwalk.com and the Wildwalks team Bushwalk.com Australia's most active bushwalking forum - Check it out.

Happy Reading. Matt :)

End of Sandringham CI to Sandringham intersection 0.1km 4 mins

(From S) From the end of Sandringham CI, this walk heads up the concrete steps and path between houses number 7 and 9. At the back of the houses, the walk continues up the hill along the track and timber steps and, before long, the track passes between two timber barriers, coming to a wide management trail and a five-way intersection (just to the left).

Sandringham intersection to Sandringham Track clearing 0.7km 15 mins

(From 0.14 km) Turn right: From the intersection, this walk heads past the No Dogs sign and up the timbers steps, following the track up the spur away from the houses. The track heads steeply at first and then, at the top of the stairs, the track bends right and flattens out. After about 150m, the track starts to head uphill again and, just past a large dead tree, the walk turns left at a 'T' intersection to head up along the ridge. After another 120m, the walk ignores a side track (on the right) and continues up the ridge for just over 100m to a small clearing and intersection with a management trail.

Sandringham Track clearing to Tower intersection 0.2km 5 mins

(From 0.82 km) Veer left: From the intersection, this walk follows the narrow track up the ridge (initially keeping the management trail below and to the right). The track heads towards the rocky outcrop and bends left, keeping the rocks on the right. The track leads between the gums and grass trees, with filtered views to the left. The track makes its way around the rock to a flat area at the top. From here, the track continues gently up the hill along to top of the ridge for about 60m, to a four-way intersection near the large tower.

Tower intersection to Colin Watters Lookout 0.1km 3 mins

(From 1 km) Turn left: From the intersection, this walk heads south-east away from the tower and gently down hill. The track soon ignores another track (on the left) and gently bends to the right, coming to the fenced and signposted 'Colin Watters Lookout'.

Colin Watters Lookout

A plaque explains that this lookout was named in 1992 in honour of the Colin D Watters, who was Senior Parks Supervisor with Gosford Council. The fenced lookout provides great view south-east, down Picketts Valley to Avoca Lake and Beach. The lookout is also home to an information board, bench seat, picnic table and garbage bin. This lookout offers one of the best views in the park and makes a great spot to stop and rest.

This is a 'Return' style walk - retrace your steps back to the beginning when you are ready.

This space is available for advertising



Full colour
Great photos



Give the joy of walking to a friend
(and support wildwalks)

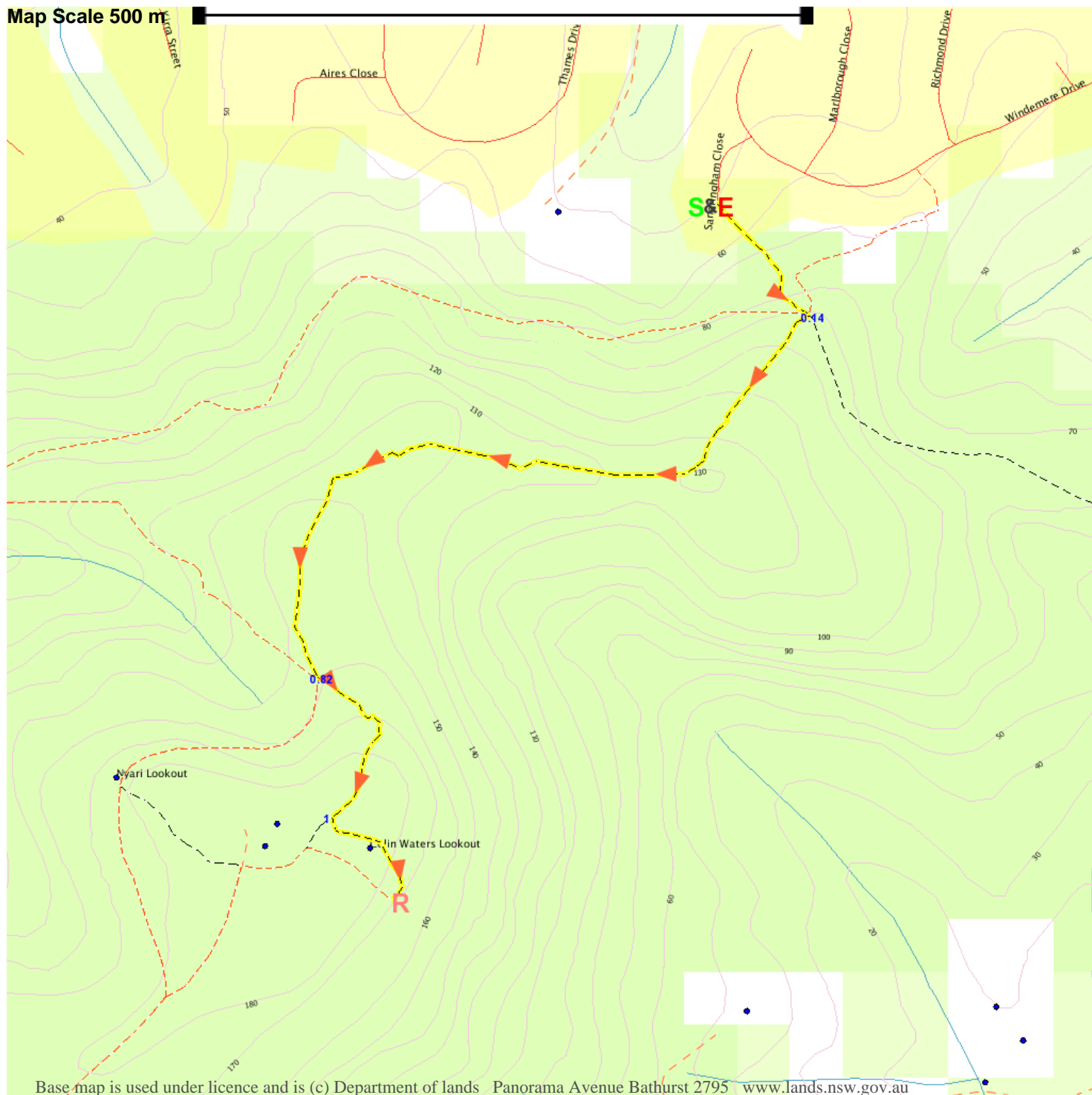
www.wildwalks.com/books.html



A walk for every body



Map Scale 500 m



Base map is used under licence and is (c) Department of lands Panorama Avenue Bathurst 2795 www.lands.nsw.gov.au

