

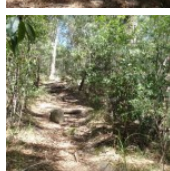
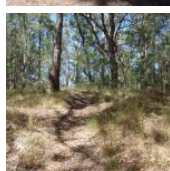
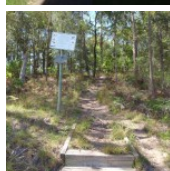
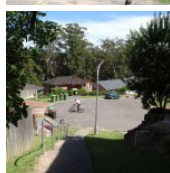
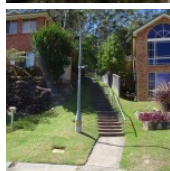
Starting from Sandringham Close, this walk follows the Sandringham Track up the hill to the views from Colin Watters Lookout. After enjoying the views, you walk past the tower to the other side of the hill to the much less spectacular Nyari Lookout. From here, you follow a wide management trail down the hill, back to the start of the walk. An enjoyable circuit walk for those who do not mind hills, worthwhile for the views from Colin Watters Lookout.

**Length:** 2.9 km  
**Time:** 1 hr 30 mins  
**Climb:** 201 m  
**Style:** Circuit  
**Rating:** Track: Hard  
**Where:** 2.5 km ESE of Erina  
**Transport:** bus car



Visit [www.wildwalks.com](http://www.wildwalks.com) for more info

*Side trips and Alternate routes mentioned in these notes are not included in the tracks overall rating, distance or time estimate. The notes only describe the side trips and Alternate routes in one direction. Allow extra time for resting and exploring areas of interest. Please ensure you and your group are well prepared and equipped for all possible hazards and delays. The authors, staff and owners of wildwalks take care in preparing these notes but will not accept responsibility for any inconvenience, loss or injury sustained by using these notes or maps. Please take care and share your experience through the website. Please check park closures, weather information and Fire Danger Rating just before leaving for your walk. Walk maybe closed during Total Fire Ban. GPS for start and end of this walk: -33.4447,151.4068*



## Wildwalks

Download the free [Bushwalk Australia eMag](http://bushwalk.com)

The eMagazine is produced by the community at [bushwalk.com](http://bushwalk.com) and the Wildwalks team  
[Bushwalk.com](http://bushwalk.com) Australia's most active bushwalking forum - Check it out.

Happy Reading. Matt :)

### End of Sandringham CI to Sandringham intersection 0.1km 4 mins

(From S) From the end of Sandringham CI, this walk heads up the concrete steps and path between houses number 7 and 9. At the back of the houses, the walk continues up the hill along the track and timber steps and, before long, the track passes between two timber barriers, coming to a wide management trail and a five-way intersection (just to the left).

### Sandringham intersection to Sandringham Track clearing 0.7km 15 mins

(From 0.14 km) Turn right: From the intersection, this walk heads past the No Dogs sign and up the timbers steps, following the track up the spur away from the houses. The track heads steeply at first and then, at the top of the stairs, the track bends right and flattens out. After about 150m, the track starts to head uphill again and, just past a large dead tree, the walk turns left at a 'T' intersection to head up along the ridge. After another 120m, the walk ignores a side track (on the right) and continues up the ridge for just over 100m to a small clearing and intersection with a management trail.

### Sandringham Track clearing to Tower intersection 0.2km 5 mins

(From 0.82 km) Veer left: From the intersection, this walk follows the narrow track up the ridge (initially keeping the management trail below and to the right). The track heads towards the rocky outcrop and bends left, keeping the rocks on the right. The track leads between the gums and grass trees, with filtered views to the left. The track makes its way around the rock to a flat area at the top. From here, the track continues gently up the hill along to top of the ridge for about 60m, to a four-way intersection near the large tower.

### Tower intersection to Colin Watters Lookout 0.1km 3 mins

(From 1 km) Turn left: From the intersection, this walk heads south-east away from the tower and gently down hill. The track soon ignores another track (on the left) and gently bends to the right, coming to the fenced and signposted 'Colin Watters Lookout'.

### Colin Watters Lookout

A plaque explains that this lookout was named in 1992 in honour of the Colin D Watters, who was Senior Parks Supervisor with Gosford Council. The fenced lookout provides great view south-east, down Picketts Valley to Avoca Lake and Beach. The lookout is also home to an information board, bench seat, picnic table and garbage bin. This lookout offers one of the best views in the park and makes a great spot to stop and rest.

### Colin Watters Lookout to Watters intersection 0.1km 2 mins

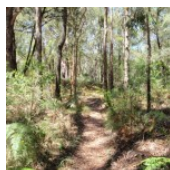
(From 1.11 km) Turn right: From the lookout, this walk heads away from the view, following the wider trail past the 'Colin Watters Lookout' and past the sheltered information board. Ignoring the shortcut track (on the left), the trail comes to 'T' intersection near the tower (about 40m past the information board).

### Watters intersection to Tower clearing 0.1km 1 mins

(From 1.2 km) Turn left: From the intersection, this walk follows the management trail, keeping the tower on the right. The trail bends right and comes to a clearing and a 'Colin Watters Lookout' sign point back along the trail.

Tear & Share

[www.wildwalks.com](http://www.wildwalks.com)  
 Bushwalking and camping

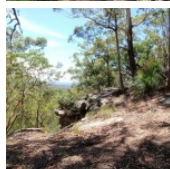


## Tower Clearing

This clearing is found between Nyari and Colin Watters Lookouts. The clearing is next to a large communication repeater tower. There is some natural shade and a solitary picnic table on the northern side.

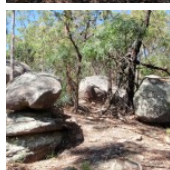
## Tower clearing to Nyari Lookout 0.1km 3 mins

(From 1.26 km) Continue straight: From the intersection, this walk crosses the clearing (keeping the tower behind and to the right), then follows the 'Nyari Lookout' sign back into the bush. The track gently winds through the ferns and soon comes to a 'T' intersection with a management trail, and 'Nyari Lookout' on the otherside side of the trail.



## Nyari Lookout

The signposted and unfenced Nyari Lookout is found beside the Sandringham Trail and is also known as Nyari Point. The views from this point are filtered through the trees and extend north-west over Erina and a small section of the Brisbane Water to Rumbalara Reserve. Not the greatest views around.



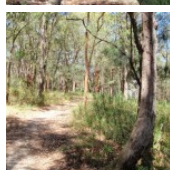
## Nyari Lookout to Sandringham Track clearing 0.2km 5 mins

(From 1.39 km) Turn right: From the lookout, this walk follows the wide management trail downhill. The trail passes a track (on the right) and bends right, then heads more gently down around the side of the steep gully. The trail bends left and just after passing a rocky outcrop (up to the right), the trail comes to a small clearing at the top of the ridge. This is an unsignposted four-way intersection with the Sandringham track.



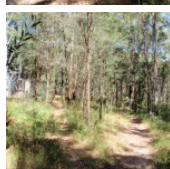
## Sandringham Track clearing to Blue Hill intersection 0.4km 5 mins

(From 1.61 km) Turn left: From the intersection, this walk follows the wide management trail as it heads downhill fairly steeply, keeping the valley to the left. The trail soon becomes much less steep and passes a couple of informal tracks (on the right) before coming to a distinct three-way intersection with another wide management trail (on the right).



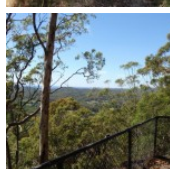
## Blue Hill intersection to Sandringham intersection 0.8km 20 mins

(From 1.98 km) Turn right: From the intersection, this walk follows the management trail north and downhill and immediately turns right, keeping the other trail uphill to the right. The walk continues down the hill, keeping the valley on the left. Soon after passing a rocky outcrop (close to the trail), the walk comes to views of houses in the valley. The trail continues gently downhill, passing a wide informal track (on the left) - this walk continues along the wider trail, keeping the houses to the left for a while. In time, the trail comes to a five-way intersection, notable for a timber barrier guarding the track on the left, and steps heading up to the right.



## Sandringham intersection to End of Sandringham CI 0.1km 4 mins

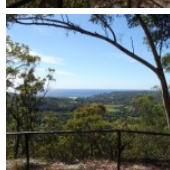
(From 2.79 km) Turn sharp left: From the intersection, this walk follows the narrower track downhill between the timber barriers, towards the houses. The track leads down a series of timber steps and then down a concrete path (and steps) between two houses, coming to the end of Sandringham CI.



## A list of paper topographical maps that cover this walk

[Gosford 1:25 000 Map Series](#)

[Gosford 1:100 000 Map Series](#)



## Nearby outdoor and camping stores

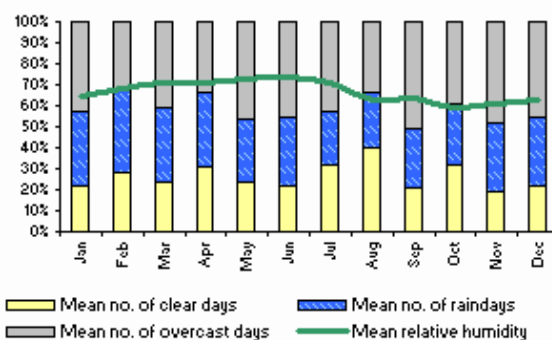
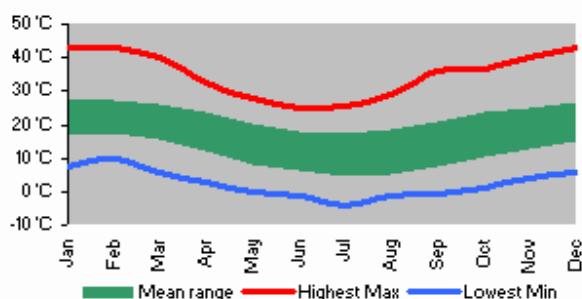
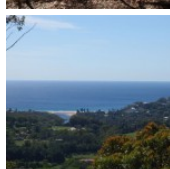
**Boots Great Outdoors** 201 The Entrance Rd Erina (02) 4367 0396

**Mannings Sports** 172 Mann St Gosford (02) 4325 1617

**Camping World Shop** 18, 482 Pacific Hwy Wyoming (02) 4324 6515

**BCF Australia Pty Ltd** 354 Manns Rd Gosford West (02) 4322 5833

**Kangaroo Tent City & BBQs** Homemakers Supa Centre Cnr Wyong Rd & Bryant Drv Tuggerah (02) 4353 4335



This space is available for advertising



Full colour  
Great photos

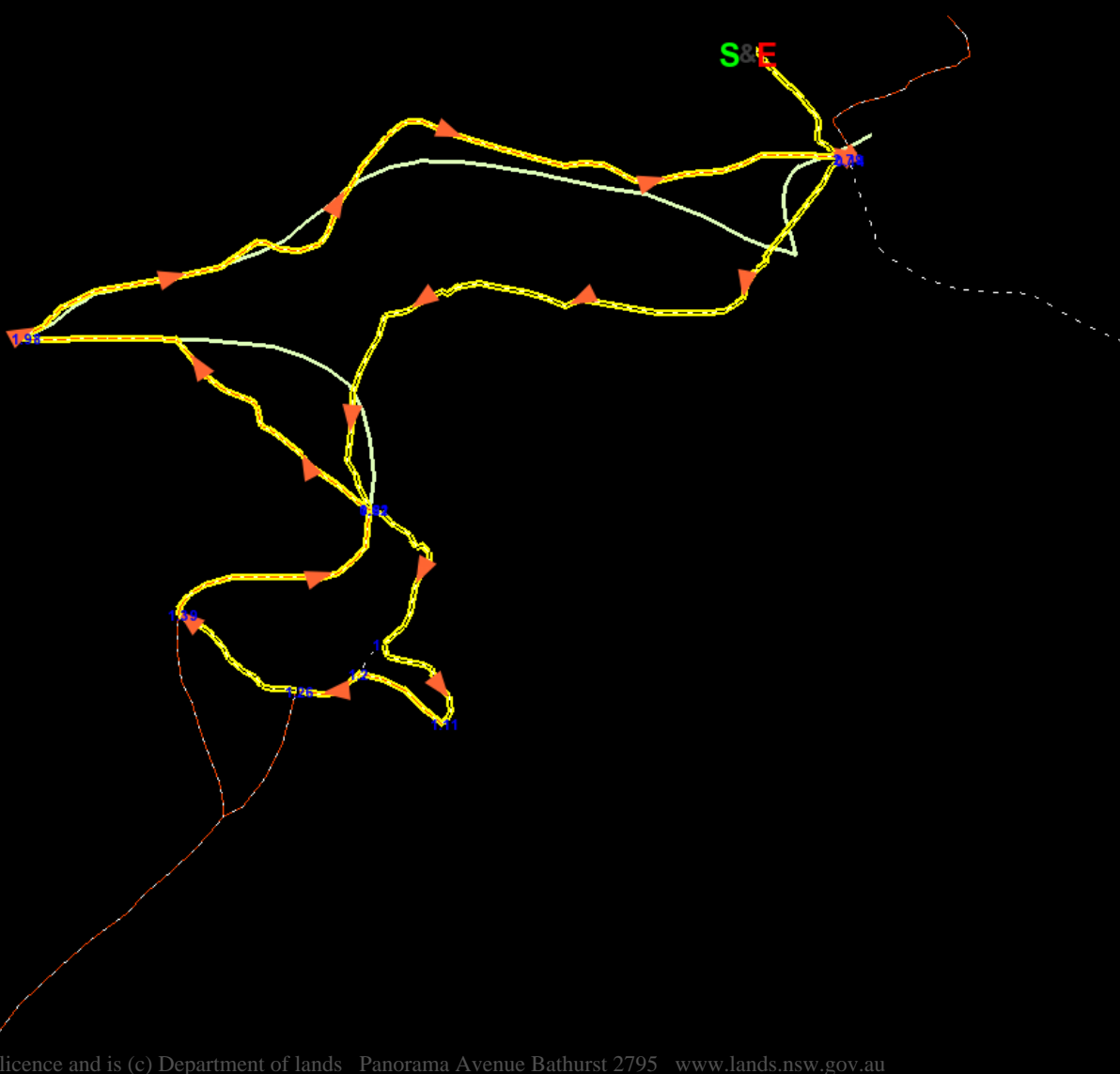


Give the joy of walking to a friend  
(and support wildwalks)

[www.wildwalks.com/books.html](http://www.wildwalks.com/books.html)



A walk for every body



Base map is used under licence and is (c) Department of lands Panorama Avenue Bathurst 2795 [www.lands.nsw.gov.au](http://www.lands.nsw.gov.au)

