



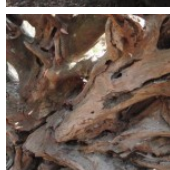
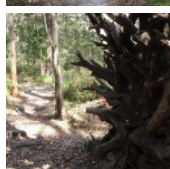
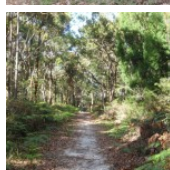
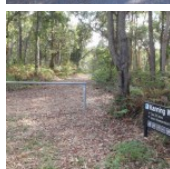
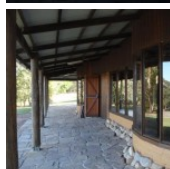
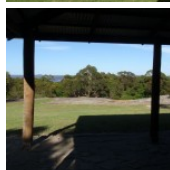
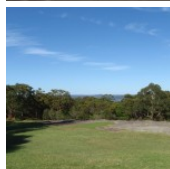
This lovely walk is a great way to explore the bushland at the top of Kincumber Mountain. From near the main picnic area, you follow a clear track before walking along the base of a long rock wall. There are a few sandstone caves, the main one mentioned in the notes is quite large, and a nice cool spot on a hot day. This walk then heads past the cave to loop back to the start via the Yanina Walk management trail. There are good wildflower displays in spring and summer.

Length: 1.3 km
Time: 30 mins
Climb: 38 m
Style: Circuit
Rating: Walk: Easy
Where: 3.5 km NW of Kincumber
Transport: car



Visit www.wildwalks.com for more info

Side trips and Alternate routes mentioned in these notes are not included in the tracks overall rating, distance or time estimate. The notes only describe the side trips and Alternate routes in one direction. Allow extra time for resting and exploring areas of interest. Please ensure you and your group are well prepared and equipped for all possible hazards and delays. The authors, staff and owners of wildwalks take care in preparing these notes but will not accept responsibility for any inconvenience, loss or injury sustained by using these notes or maps. Please take care and share your experience through the website. Please check park closures, weather information and Fire Danger Rating just before leaving for your walk. Walk maybe closed during Total Fire Ban. GPS for start and end of this walk: -33.4591,151.3918



Wildwalks

Download the free [Bushwalk Australia eMag](http://bushwalk.com)

The eMagazine is produced by the community at bushwalk.com and the Wildwalks team
Bushwalk.com Australia's most active bushwalking forum - Check it out.

Happy Reading. Matt :)



Honeman's Rock picnic area

Honeman's Rock picnic area is a large picnic area at the top end of Island View Drive. This picnic area has a couple of large grassy areas, composting toilets, free electric BBQs, picnic tables, shelters, garbage bins, drinking water and information signs. The picnic area is home to a mud brick building (available for hire) and Honeman's Rock, from which the area derives its name. There is a fair amount of parking available next the picnic area, and some extra spaces a few hundred meters down the road.

Mud Brick Building

The mud brick building is a landmark in the main picnic area at Kincumber Mountain, and is a popular spot to gather. Also known as 'Kincumber Mountain Information Centre', 'The Kiosk', 'Kincumber Kiosk' and 'Kincumber Mountain Kiosk', the building was constructed in 1986 with funding from Community Employment Programme. The building is generally locked but can be booked through the local Lions Club for special events. The building has a rain water tank, small kitchen and one main large room. The verandah also provides good shelter.

Mudbrick building car park to Kanning Walk gate 0.1km 1 mins

(From S) From the car park, this walk heads up the road, initially keeping the mud brick building to the left. Soon the road leads to an intersection (next to an information board and fence on the left).

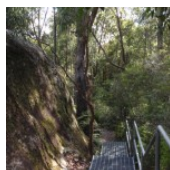
Turn right: From the intersection, this walk follows the 'One Way' road sign away from the picnic area and along the road. Almost immediately, there is a locked gate and the 'Kanning Walk' sign (on the left).

Kanning Walk gate to Cave 0.4km 5 mins

(From 0.09 km) Turn left: From the road, this walk follows the 'Kanning Walk cave 300 metres' sign around the locked gate and along the old sandy management trail. After about 120m the walk turns right, following another 'Kanning Walk' sign, and passes between two large, exposed tree root systems. Soon after this, the track is concrete for a short distance and passes along the base of a long rock wall. The walk goes down some steel stairs and across a timber bridge, coming to a sandstone overhang cave. This cave is quite large and has a 'cave 100m' sign, pointing further along the track. Follow this sign for about 150m, passing over a steel platform, up a small rise and down some steel stairs. From the base of these stairs, the walk continues for about 25m along the flat track to find the unsignposted entrance to the cave. The entrance is between two large boulders on the left.

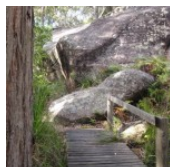
Kanning Walk Cave

The main cave on Kanning Walk is surprising large for a sandstone environment. The cave has two main sections. There is a large cabin about 7m wide and 9m deep. A small tunnel extends about 10m further to a small chamber at the back. The entrance to the cave is behind two large boulders, providing extra shelter. It is believed that A. A. Glasson lived in the cave in the early 1930's, which was not uncommon during the depression. The cave has proved to be a great place to rest on hot days.



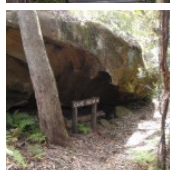
Cave to Int of Kanning and Yanina walks 0.2km 5 mins

(From 0.46 km) Continue straight: From the entrance to the cave, this walk follows the track around the base of the rock wall, keeping the rock to the left. Soon the track passes (and follows) an 'Alternate Return' sign then leads up some timber steps. The track soon flattens out and heads through a timber barrier, coming to a 'T' intersection with a wide management trail, and a few 'Kanning Walk' signs.



Int of Kanning and Yanina walks to End of Island View Dr 0.4km 5 mins

(From 0.68 km) Turn left: From the intersection, this walk follows the 'Kanning Walk' & 'Mudbrick Building' signs along the management trail. After about 40m, the trail passes a track and locked gate (on the left, which leads to the roof of a cave) and continues along the wide trail for another 230m. Just as the walk comes into view of a cottage (straight ahead through the trees), the trail comes to a clear intersection with a link track (on the right).



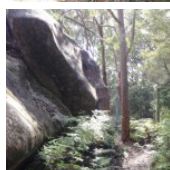
Continue straight: From the intersection, this walk follows the wide trail gently downhill towards the house (just visible through the trees). The trail passes a fence (on the left) as the trail bends left and after about 70m, passes a cottage (the house on the right). About 50m further along the trail, the walk passes a 'Yanina Walk Colin Watters Lookout' sign, and heads around a locked gate to Island View Rd.



End of Island View Dr to Mudbrick building car park 0.2km 3 mins

(From 1.09 km) Continue straight: From the end of the road, this walk follows the road away from the locked gate and 'Yanina Walk' sign, keeping the picnic area to the right. The road bends a little, passing a few more car parks and an information board before coming to an intersection marked with a 'No Entry' sign.

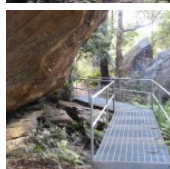
Continue straight: From the intersection, this walk heads downhill along the road, passing the 'No Entry' sign and keeping the picnic area on the right. The road soon comes to another car park next to the mud brick building.



A list of paper topographical maps that cover this walk

[Gosford 1:25 000 Map Series](#)

Gosford 1:100 000 Map Series



Nearby outdoor and camping stores

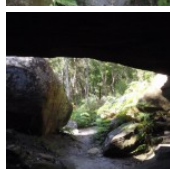
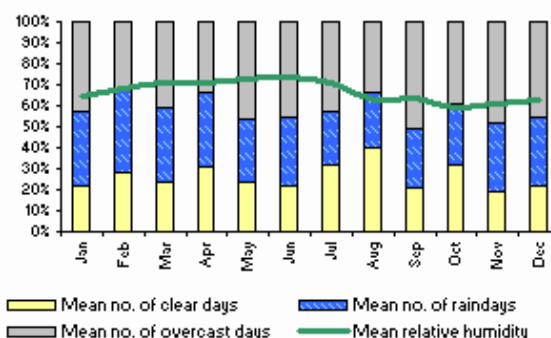
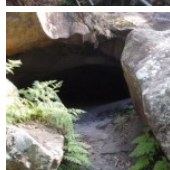
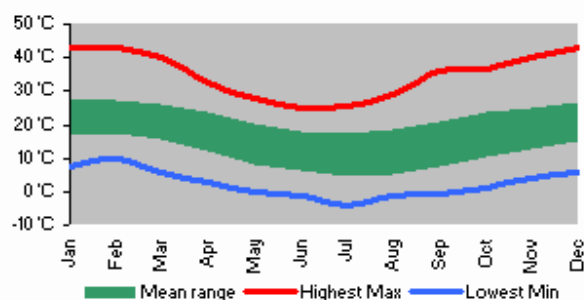
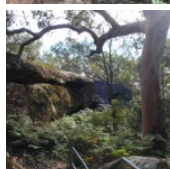
Boots Great Outdoors 201 The Entrance Rd Erina (02) 4367 0396

Mannings Sports 172 Mann St Gosford (02) 4325 1617

Camping World Shop 18, 482 Pacific Hwy Wyoming (02) 4324 6515

BCF Australia Pty Ltd 354 Manns Rd Gosford West (02) 4322 5833

Kangaroo Tent City & BBQs Homemakers Supa Centre Cnr Wyong Rd & Bryant Drv Tuggerah (02) 4353 4335



This space is available for advertising



Full colour
Great photos



Give the joy of walking to a friend
(and support wildwalks)

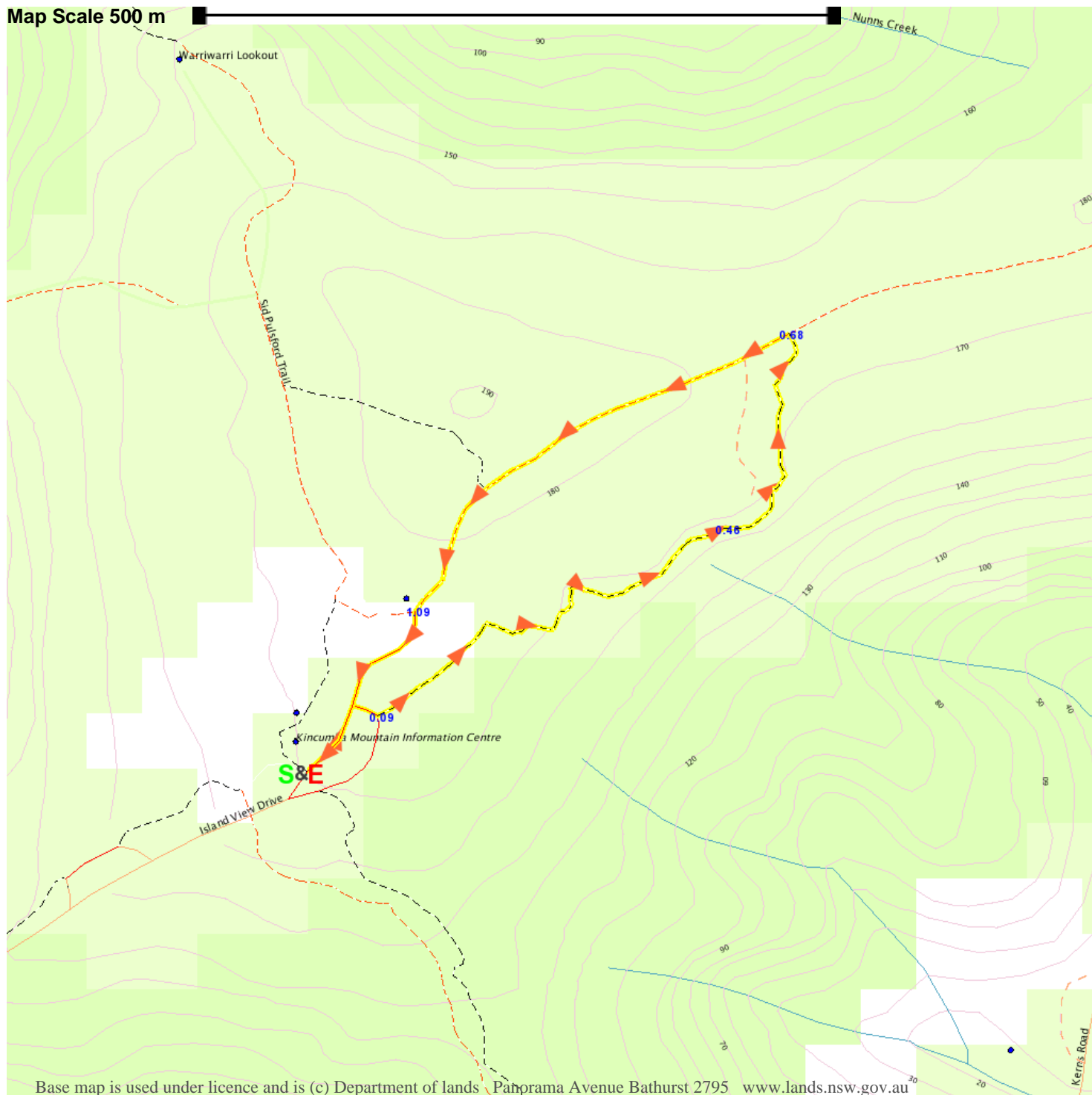
www.wildwalks.com/books.html



A walk for every body



Map Scale 500 m



Base map is used under licence and is (c) Department of lands, Panorama Avenue Bathurst 2795 www.lands.nsw.gov.au

