

# **wildwalks** Kincumber to Terrigal (via Glasson's Trl)

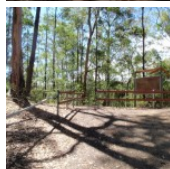


This walk explores the main highlights of Kincumber Mountain Regional Reserve. Starting on the Glasson's trail, the walk explores a variety of forests along the way to Honeman's Rock and picnic area. After a rest, you visit a large cave on Kanning Walk and continue to the views at Colin Watters Lookout. You then follow a track down the ridge, passing some interesting rocky outcrops before arriving at the end of Sandringham Close, Terrigal.

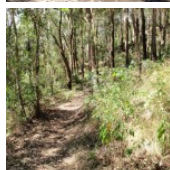
**Length:** 4.5 km  
**Time:** 2 hrs  
**Climb:** 220 m  
**Style:** One way  
**Rating:** Track: Hard  
**Where:** 4.1 km WNW of Kincumber  
**Transport:** bus car



Visit [www.wildwalks.com](http://www.wildwalks.com) for more info



*Side trips and Alternate routes mentioned in these notes are not included in the tracks overall rating, distance or time estimate. The notes only describe the side trips and Alternate routes in one direction. Allow extra time for resting and exploring areas of interest. Please ensure you and your group are well prepared and equipped for all possible hazards and delays. The authors, staff and owners of wildwalks take care in preparing these notes but will not accept responsibility for any inconvenience, loss or injury sustained by using these notes or maps. Please take care and share your experience through the website. Please check park closures, weather information and Fire Danger Rating just before leaving for your walk. Walk maybe closed during Total Fire Ban. GPS for start the start of this walk:-33.4637,151.3792 & for the end:-33.4447,151.4068*

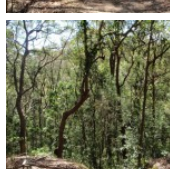
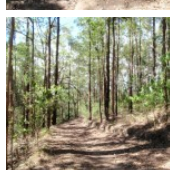
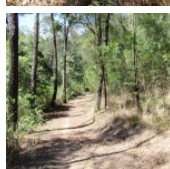
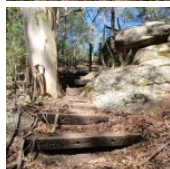


## Wildwalks

Download the free [Bushwalk Australia eMag](http://bushwalk.com.au)

The eMagazine is produced by the community at [bushwalk.com](http://bushwalk.com) and the Wildwalks team  
[Bushwalk.com](http://Bushwalk.com) Australia's most active bushwalking forum - Check it out.

Happy Reading. Matt :)



## Glasson's Car Park to Glasson's crossing 1km 25 mins

(From S) From the car park (about 230m from the end of Kincumber St past the 'Kincumber Mountain Regional Reserve' sign), this walk heads to the back of the car park, through the gap in the fence and turns right. The walk follows the track, keeping the water tank up the hill to the right. The walk leads up some timber steps through the rocks and, soon after passing the water tank, the track comes to a 'T' intersection with a management trail.

Veer left: From the intersection, this walk follows the wide management trail away from the water tank and gently down the hill, keeping the valley to the left. The trail meanders through the bush for about 300m, rounding a wide sweeping right-hand bend - during this bend, the walk comes to a rocky outcrop with a view into the valley (on the left). From here, the walk continues around the bend and up the hill. As the walk enters a more lush section of forest, the trail becomes narrower for a while. The trail then begins to climb again as it widens back out, before coming to a locked gate and road. The walk crosses the road, coming to a small clearing on the other side.

## Glasson's crossing to Bottom of Overflow car park 0.5km 10 mins

(From 0.97 km) Continue straight: From the clearing, this walk heads up the ramp behind the clearing, keeping the road to the left. The track leads up the timber steps, between the timber posts and turns right, heading up more steps. The rocky track flattens out somewhat and heads along the top of the ridge, among the grass trees and angophora forest, where the track then leads down the hill to the road. At the road, the walk turns right to follow the road for about 10m, then turns left and follows the track back into the bush (now with the road to the right). This track gently meanders for almost 100m before coming to the bottom of a car park, a picnic shelter and a 'Glasson's Trail - Island View Entrance 1300 metres' sign pointing back down the track.

## Glasson's Trail Picnic Area

At the lower end of the overflow car park, near the top of Glasson's Trail, is a single picnic table and shelter. There are no other facilities here. A short distance from the main picnic area, this is an alternative spot for those wanting a picnic table amongst more native trees.

## Bottom of Overflow car park to Mudbrick building car park 0.2km 5 mins

(From 1.46 km) Continue straight: From the picnic shelter, this walk heads uphill across the car park to another 'Glasson's Trail' sign, at the base of the stone steps.

Veer left: From the top of the car park, this walk follows the 'Glassons Trail - Honemans Rock picnic area' sign up the stone steps. The track follows the footpath for a short time before coming to a large clearing and another 'Glassons Trail' sign pointing back down to the car park. From here, the walk heads across the grassy area, bending to the right around the rock to come to the end of Honeman's rock (on the left) and a gate (on the right) (just in view of the mud brick building).

Continue straight: From Honeman's rock, this walk heads up the hill over the grassy clearing to the front of the mud brick building and the car park on the right.

Tear & Share

[www.wildwalks.com](http://www.wildwalks.com)  
 Bushwalking and camping

# **Kincumber to Terrigal (via Glasson's Trl)**



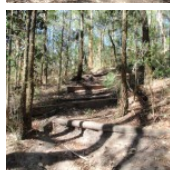
## Mud Brick Building

The mud brick building is a landmark in the main picnic area at Kincumber Mountain, and is a popular spot to gather. Also known as 'Kincumber Mountain Information Centre', 'The Kiosk', 'Kincumber Kiosk' and 'Kincumber Mountain Kiosk', the building was constructed in 1986 with funding from Community Employment Programme. The building is generally locked but can be booked through the local Lions Club for special events. The building has a rain water tank, small kitchen and one main large room. The verandah also provides good shelter.



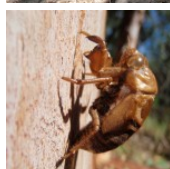
## Honeman's Rock picnic area

Honeman's Rock picnic area is a large picnic area at the top end of Island View Drive. This picnic area has a couple of large grassy areas, composting toilets, free electric BBQs, picnic tables, shelters, garbage bins, drinking water and information signs. The picnic area is home to a mud brick building (available for hire) and Honeman's Rock, from which the area derives its name. There is a fair amount of parking available next the picnic area, and some extra spaces a few hundred meters down the road.



## Honeman's Rock

Honeman's Rock (aka Honeyman's Rock) is a large rock outcrop in front of the mud brick building, in the Honeman's Rock Picnic area. The exposed section of rock is 60m long and about 30m wide, with the western side having a significant unfenced drop. The rock is named after Cecil Lyle Honeman who became a lease holder on the mountain in 1962. The rock has a large depression that once filled with water, and a drain has been dug to keep the pool empty and clear of rubbish.



## Mudbrick building car park to Kanning Walk gate 0.1km 1 mins

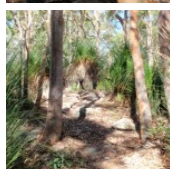
(From 1.7 km) Turn left: From the car park, this walk heads up the road, initially keeping the mud brick building to the left. Soon the road leads to an intersection (next to an information board and fence on the left).

Turn right: From the intersection, this walk follows the 'One Way' road sign away from the picnic area and along the road. Almost immediately, there is a locked gate and the 'Kanning Walk' sign (on the left).



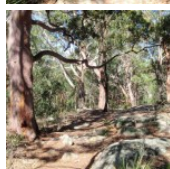
## Kanning Walk gate to Cave 0.4km 5 mins

(From 1.79 km) Turn left: From the road, this walk follows the 'Kanning Walk cave 300 metres' sign around the locked gate and along the old sandy management trail. After about 120m the walk turns right, following another 'Kanning Walk' sign, and passes between two large, exposed tree root systems. Soon after this, the track is concrete for a short distance and passes along the base of a long rock wall. The walk goes down some steel stairs and across a timber bridge, coming to a sandstone overhang cave. This cave is quite large and has a 'cave 100m' sign, pointing further along the track. Follow this sign for about 150m, passing over a steel platform, up a small rise and down some steel stairs. From the base of these stairs, the walk continues for about 25m along the flat track to find the unsignposted entrance to the cave. The entrance is between two large boulders on the left.



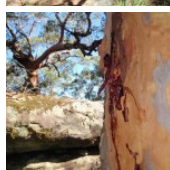
## Kanning Walk Cave

The main cave on Kanning Walk is surprising large for a sandstone environment. The cave has two main sections. There is a large cabin about 7m wide and 9m deep. A small tunnel extends about 10m further to a small chamber at the back. The entrance to the cave is behind two large boulders, providing extra shelter. It is believed that A. A. Glasson lived in the cave in the early 1930's, which was not uncommon during the depression. The cave has proved to be a great place to rest on hot days.



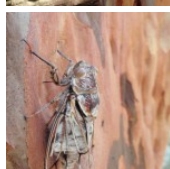
## Cave to Int of Kanning and Yanina walks 0.2km 5 mins

(From 2.16 km) Continue straight: From the entrance to the cave, this walk follows the track around the base of the rock wall, keeping the rock to the left. Soon the track passes (and follows) an 'Alternate Return' sign then leads up some timber steps. The track soon flattens out and heads through a timber barrier, coming to a 'T' intersection with a wide management trail, and a few 'Kanning Walk' signs.



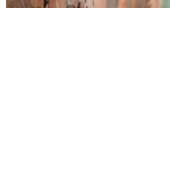
## Int of Kanning and Yanina walks to Int of Nyari and Colin Watters lookout trails 0.7km 10 mins

(From 2.38 km) Turn right: From the intersection, this walk heads north-east, following the 'Yanina Walk' sign along the wide trail. The trail winds through the fern, palm and tall-wooded forest, passing a few small clearings on the side. The trail then comes to a clear, signposted 'Y' intersection with signs for 'Colin Watters Lookout' (leading right) and 'Nyari Lookout' (leading left).



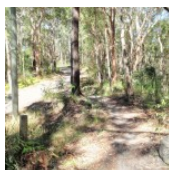
## Int of Nyari and Colin Watters lookout trails to Tower clearing 0.1km 3 mins

(From 3.13 km) Continue straight: From the intersection, this walk follows the 'Colin Watters Lookout' sign gently uphill. After about 80m, the trail opens up into a large clearing, which the walk continues through (passing a shortcut track on the right). The walk comes to an intersection near the far end of the clearing (just before the picnic table), marked with another 'Colin Watters Lookout' sign (on the right).



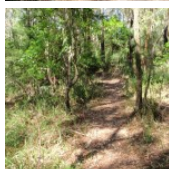


# **Kincumber to Terrigal (via Glasston's Trl)**



## Tower Clearing

This clearing is found between Nyari and Colin Watters Lookouts. The clearing is next to a large communication repeater tower. There is some natural shade and a solitary picnic table on the northern side.



## Tower clearing to Colin Watters Lookout 0.1km 3 mins

(From 3.27 km) Turn right: From the clearing, this walk follows the 'Colin Watters Lookout' sign along the narrower management trail, keeping the tower through the trees on the left. The trail bends left, soon coming to another intersection.

Turn right: From the intersection, this walk heads east, directly away from the tower along the management trail, towards the sheltered information board. Soon after passing the information sign (and the shortcut track on the right), this walk continues down the trail to the fenced and signposted 'Colin Watters Lookout'.



## Colin Watters Lookout

A plaque explains that this lookout was named in 1992 in honour of the Colin D Watters, who was Senior Parks Supervisor with Gosford Council. The fenced lookout provides great view south-east, down Picketts Valley to Avoca Lake and Beach. The lookout is also home to an information board, bench seat, picnic table and garbage bin. This lookout offers one of the best views in the park and makes a great spot to stop and rest.



## Colin Watters Lookout to Sandringham Track clearing 0.3km 5 mins

(From 3.42 km) Turn left: From the lookout, this walk follows the narrower track, initially keeping the view and fence on the right. The track soon bends left and passes an informal track (on the right), coming to a clear intersection with a wider trail near the large tower.

Turn right: From the intersection, this walk heads north-east away from the tower (keeping it behind and to the left), moving towards the rocky outcrop. The track passes the rocks and continues along the flat section to a larger rocky outcrop. Here, the walk keeps the rocks to the left, following the track between the gums and grass trees, with filtered views to the right. Keeping near the top of the ridge, the track continues down past the rock to a small clearing and intersection with a management trail.



## Sandringham Track clearing to Sandringham intersection 0.7km 15 mins

(From 3.7 km) Veer right: From the intersection, this walk follows the narrow track downhill along the top of the ridge, initially keeping the management trail down to the left. After about 120m, this walk takes the right-hand fork at a 'Y' intersection and, another 150m later, turns right again in front of the large, dead tree. The track leads down a few steps and across a flat saddle for a short time. The track then turns left and heads down a long series of timber steps, coming to a wide management trail at a five-way intersection.



## Sandringham intersection to End of Sandringham CI 0.1km 4 mins

(From 4.39 km) Turn left: From the intersection, this walk follows the narrower track downhill between the timber barriers, towards the houses. The track leads down a series of timber steps and then down a concrete path (and steps) between two houses, coming to the end of Sandringham CI.



## A list of paper topographical maps that cover this walk

[Gosford](#) 1:25 000 Map Series

Gosford 1:100 000 Map Series



## Nearby outdoor and camping stores

**Boots Great Outdoors** 201 The Entrance Rd Erina (02) 4367 0396

**Mannings Sports** 172 Mann St Gosford (02) 4325 1617

**Camping World** Shop 18, 482 Pacific Hwy Wyoming (02) 4324 6515

**BCF Australia Pty Ltd** 354 Manns Rd Gosford West (02) 4322 5833

**Kangaroo Tent City & BBQs** Homemakers Supa Centre Cnr Wyong Rd & Bryant Drv Tuggerah (02) 4353 4335



Tear & Share

[www.wildwalks.com](http://www.wildwalks.com)

Bushwalking and camping

# wildwalks Kincumber to Terrigal (via Glasson's Trl)

This space is available for advertising



Full colour  
Great photos



Give the joy of walking to a friend  
(and support wildwalks)

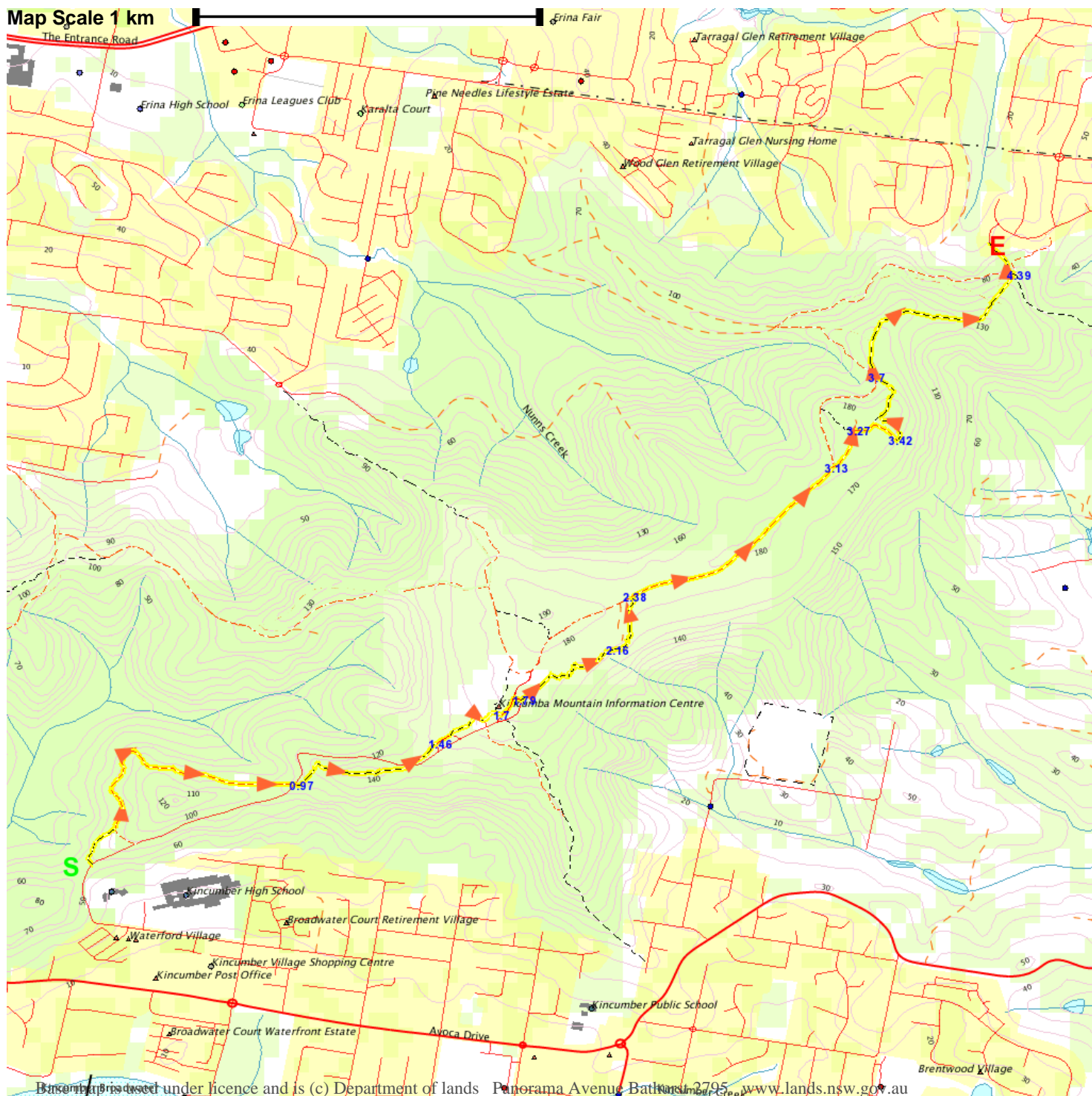
[www.wildwalks.com/books.html](http://www.wildwalks.com/books.html)



A walk for every body



Map Scale 1 km



Base map is used under licence and is (c) Department of lands Panorama Avenue Bathurst 2795 [www.lands.nsw.gov.au](http://www.lands.nsw.gov.au)

