

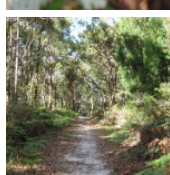
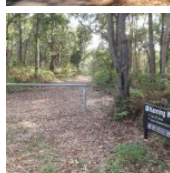
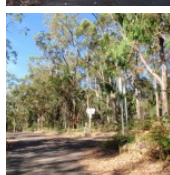
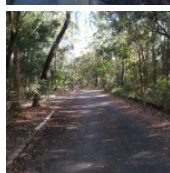
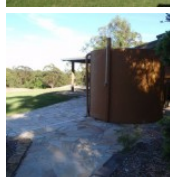
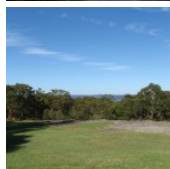
This short walk follows a clear track to a large sandstone cave on the Kanning Walk. From the Honeman's Picnic Area, follow Kanning Walk through the bush and along the side of a long rock wall. There are several caves along the way, the main one being quiet large and tucked behind some large boulders. The cave provides a cool spot on hot days. After admiring the cave, walk back the same way, passing some large angophora trees.

Length: 0.9 km
Time: 20 mins
Climb: 34 m
Style: Return
Rating: Walk: Easy
Where: 3.5 km NW of Kincumber
Transport: car



Visit www.wildwalks.com for more info

Side trips and Alternate routes mentioned in these notes are not included in the tracks overall rating, distance or time estimate. The notes only describe the side trips and Alternate routes in one direction. Allow extra time for resting and exploring areas of interest. Please ensure you and your group are well prepared and equipped for all possible hazards and delays. The authors, staff and owners of wildwalks take care in preparing these notes but will not accept responsibility for any inconvenience, loss or injury sustained by using these notes or maps. Please take care and share your experience through the website. Please check park closures, weather information and Fire Danger Rating just before leaving for your walk. Walk maybe closed during Total Fire Ban. GPS for start and end of this walk: -33.4591,151.3918



Wildwalks

Download the free Bushwalk Australia eMag

The eMagazine is produced by the community at bushwalk.com and the Wildwalks team
Bushwalk.com Australia's most active bushwalking forum - Check it out.

Happy Reading. Matt :)



Honeman's Rock picnic area

Honeman's Rock picnic area is a large picnic area at the top end of Island View Drive. This picnic area has a couple of large grassy areas, composting toilets, free electric BBQs, picnic tables, shelters, garbage bins, drinking water and information signs. The picnic area is home to a mud brick building (available for hire) and Honeman's Rock, from which the area derives its name. There is a fair amount of parking available next the picnic area, and some extra spaces a few hundred meters down the road.

Honeman's Rock

Honeman's Rock (aka Honeyman's Rock) is a large rock outcrop in front of the mud brick building, in the Honeman's Rock Picnic area. The exposed section of rock is 60m long and about 30m wide, with the western side having a significant unfenced drop. The rock is named after Cecil Lyle Honeman who became a lease holder on the mountain in 1962. The rock has a large depression that once filled with water, and a drain has been dug to keep the pool empty and clear of rubbish.

Mud Brick Building

The mud brick building is a landmark in the main picnic area at Kincumber Mountain, and is a popular spot to gather. Also known as 'Kincumber Mountain Information Centre', 'The Kiosk', 'Kincumber Kiosk' and 'Kincumber Mountain Kiosk', the building was constructed in 1986 with funding from Community Employment Programme. The building is generally locked but can be booked through the local Lions Club for special events. The building has a rain water tank, small kitchen and one main large room. The verandah also provides good shelter.

Mudbrick building car park to Kanning Walk gate 0.1km 1 mins

(From S) From the car park, this walk heads up the road, initially keeping the mud brick building to the left. Soon the road leads to an intersection (next to an information board and fence on the left).

Turn right: From the intersection, this walk follows the 'One Way' road sign away from the picnic area and along the road. Almost immediately, there is a locked gate and the 'Kanning Walk' sign (on the left).

Kanning Walk gate to Cave 0.4km 5 mins

(From 0.09 km) Turn left: From the road, this walk follows the 'Kanning Walk cave 300 metres' sign around the locked gate and along the old sandy management trail. After about 120m the walk turns right, following another 'Kanning Walk' sign, and passes between two large, exposed tree root systems. Soon after this, the track is concrete for a short distance and passes along the base of a long rock wall. The walk goes down some steel stairs and across a timber bridge, coming to a sandstone overhang cave. This cave is quite large and has a 'cave 100m' sign, pointing further along the track. Follow this sign for about 150m, passing over a steel platform, up a small rise and down some steel stairs. From the base of these stairs, the walk continues for about 25m along the flat track to find the unsignposted entrance to the cave. The entrance is between two large boulders on the left.



Kanning Walk Cave

The main cave on Kanning Walk is surprising large for a sandstone environment. The cave has two main sections. There is a large cabin about 7m wide and 9m deep. A small tunnel extends about 10m further to a small chamber at the back. The entrance to the cave is behind two large boulders, providing extra shelter. It is believed that A. A. Glasson lived in the cave in the early 1930's, which was not uncommon during the depression. The cave has proved to be a great place to rest on hot days.

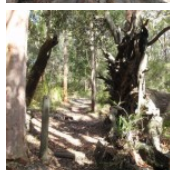


This is a 'Return' style walk - retrace your steps back to the beginning when you are ready.

A list of paper topographical maps that cover this walk

[Gosford](#) 1:25 000 Map Series

Gosford 1:100 000 Map Series



Nearby outdoor and camping stores

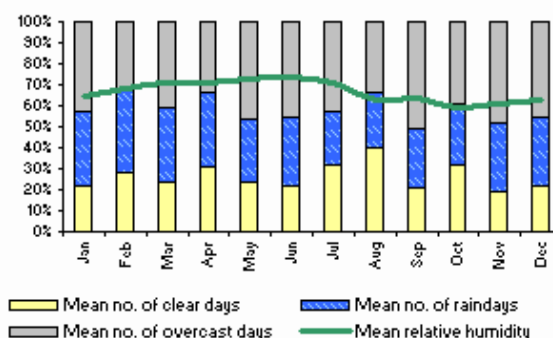
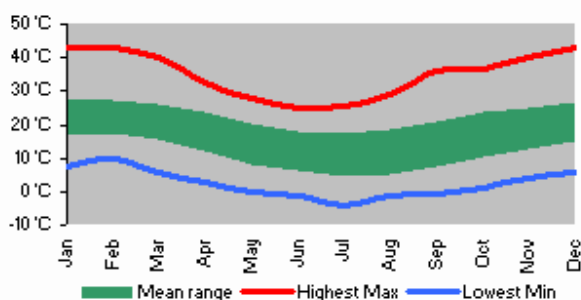
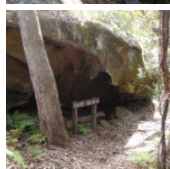
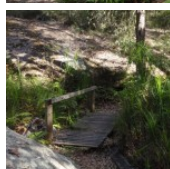
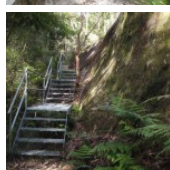
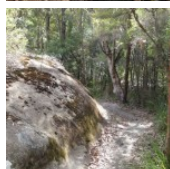
Boots Great Outdoors 201 The Entrance Rd Erina (02) 4367 0396

Mannings Sports 172 Mann St Gosford (02) 4325 1617

Camping World Shop 18, 482 Pacific Hwy Wyoming (02) 4324 6515

BCF Australia Pty Ltd 354 Manns Rd Gosford West (02) 4322 5833

Kangaroo Tent City & BBQs Homemakers Supa Centre Cnr Wyong Rd & Bryant Drv Tuggerah (02) 4353 4335



This space is available
for advertising



Full colour
Great photos

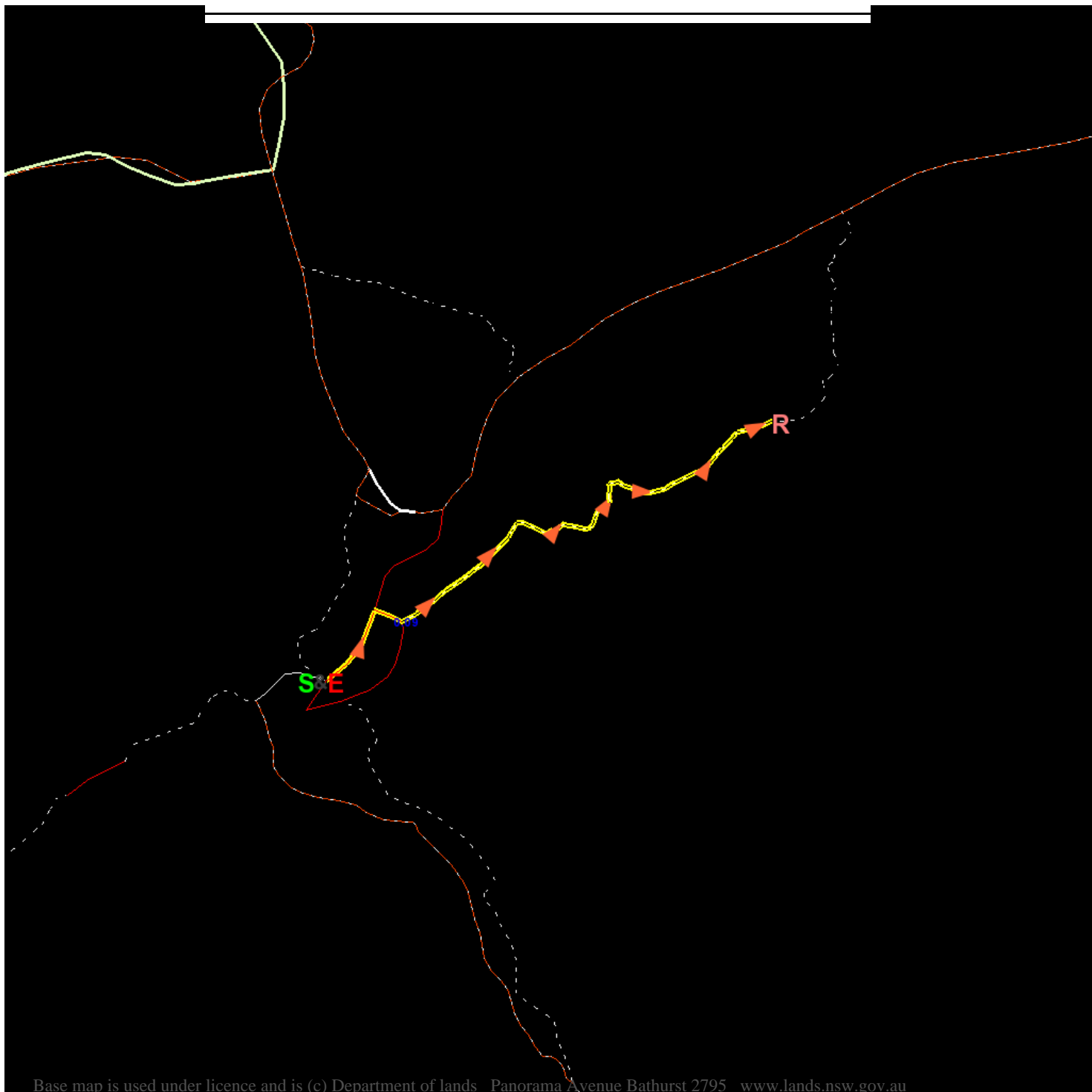


Give the joy of walking to a friend
(and support wildwalks)

www.wildwalks.com/books.html



A walk for every body



Base map is used under licence and is (c) Department of lands Panorama Avenue Bathurst 2795 www.lands.nsw.gov.au

