



Glasson's Trail starts near the main entrance to Kincumber Mountain Reserve and follows a series of management trails and tracks up to the main picnic area. The walk offers a great way to explore the diverse vegetation and visiting some interesting rock formations. The walk is signposted and crosses the road a few times before coming across a single picnic table near the end of the walk. The walk finishes at the more popular picnic area at Honeman's Rock.

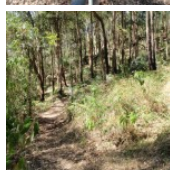
Length: 1.7 km
Time: 1 Hr
Climb: 158 m
Style: One way
Rating: Track: Moderate
Where: 4.1 km WNW of Kincumber
Transport: bus car



Visit www.wildwalks.com for more info



Side trips and Alternate routes mentioned in these notes are not included in the tracks overall rating, distance or time estimate. The notes only describe the side trips and Alternate routes in one direction. Allow extra time for resting and exploring areas of interest. Please ensure you and your group are well prepared and equipped for all possible hazards and delays. The authors, staff and owners of wildwalks take care in preparing these notes but will not accept responsibility for any inconvenience, loss or injury sustained by using these notes or maps. Please take care and share your experience through the website. Please check park closures, weather information and Fire Danger Rating just before leaving for your walk. Walk maybe closed during Total Fire Ban. GPS for start the start of this walk:-33.4637,151.3792 & for the end:-33.4591,151.3918

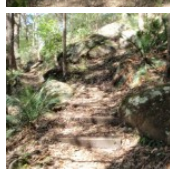


Wildwalks

Download the free [Bushwalk Australia eMag](http://bushwalk.com)

The eMagazine is produced by the community at bushwalk.com and the Wildwalks team
[Bushwalk.com](http://bushwalk.com) Australia's most active bushwalking forum - Check it out.

Happy Reading. Matt :)



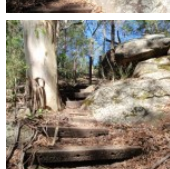
Glasson's Car Park to Water tank intersection 0.2km 4 mins

(From S) From the car park (about 230m from the end of Kincumber St past the 'Kincumber Mountain Regional Reserve' sign), this walk heads to the back of the car park, through the gap in the fence and turns right. The walk follows the track, keeping the water tank up the hill to the right. The walk leads up some timber steps through the rocks and, soon after passing the water tank, the track comes to a 'T' intersection with a management trail.



Water tank intersection to Glasson's crossing 0.8km 20 mins

(From 0.16 km) Veer left: From the intersection, this walk follows the wide management trail away from the water tank and gently down the hill, keeping the valley to the left. The trail meanders through the bush for about 300m, rounding a wide sweeping right-hand bend - during this bend, the walk comes to a rocky outcrop with a view into the valley (on the left). From here, the walk continues around the bend and up the hill. As the walk enters a more lush section of forest, the trail becomes narrower for a while. The trail then begins to climb again as it widens back out, before coming to a locked gate and road. The walk crosses the road, coming to a small clearing on the other side.



Glasson's crossing to Bottom of Overflow car park 0.5km 10 mins

(From 0.97 km) Continue straight: From the clearing, this walk heads up the ramp behind the clearing, keeping the road to the left. The track leads up the timber steps, between the timber posts and turns right, heading up more steps. The rocky track flattens out somewhat and heads along the top of the ridge, among the grass trees and angophora forest, where the track then leads down the hill to the road. At the road, the walk turns right to follow the road for about 10m, then turns left and follows the track back into the bush (now with the road to the right). This track gently meanders for almost 100m before coming to the bottom of a car park, a picnic shelter and a 'Glasson's Trail - Island View Entrance 1300 metres' sign pointing back down the track.



Glasson's Trail Picnic Area

At the lower end of the overflow car park, near the top of Glasson's Trail, is a single picnic table and shelter. There are no other facilities here. A short distance from the main picnic area, this is an alternative spot for those wanting a picnic table amongst more native trees.



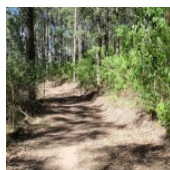
Bottom of Overflow car park to Top of Overflow car park 0.1km 2 mins

(From 1.46 km) Continue straight: From the picnic shelter, this walk heads uphill across the car park to another 'Glasson's Trail' sign, at the base of the stone steps.



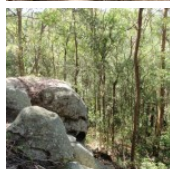
Top of Overflow car park to Honeman's Rock 0.1km 3 mins

(From 1.51 km) Veer left: From the top of the car park, this walk follows the 'Glassons Trail - Honemans Rock picnic area' sign up the stone steps. The track follows the footpath for a short time before coming to a large clearing and another 'Glassons Trail' sign pointing back down to the car park. From here, the walk heads across the grassy area, bending to the right around the rock to come to the end of Honeman's rock (on the left) and a gate (on the right) (just in view of the mud brick building).



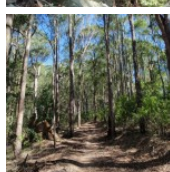
Honeman's Rock

Honeman's Rock (aka Honeyman's Rock) is a large rock outcrop in front of the mud brick building, in the Honeman's Rock Picnic area. The exposed section of rock is 60m long and about 30m wide, with the western side having a significant unfenced drop. The rock is named after Cecil Lyle Honeman who became a lease holder on the mountain in 1962. The rock has a large depression that once filled with water, and a drain has been dug to keep the pool empty and clear of rubbish.



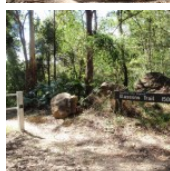
Honeman's Rock to Mudbrick building car park 0.1km 2 mins

(From 1.63 km) Continue straight: From Honeman's rock, this walk heads up the hill over the grassy clearing to the front of the mud brick building and the car park on the right.



Mud Brick Building

The mud brick building is a landmark in the main picnic area at Kincumber Mountain, and is a popular spot to gather. Also known as 'Kincumber Mountain Information Centre', 'The Kiosk', 'Kincumber Kiosk' and 'Kincumber Mountain Kiosk', the building was constructed in 1986 with funding from Community Employment Programme. The building is generally locked but can be booked through the local Lions Club for special events. The building has a rain water tank, small kitchen and one main large room. The verandah also provides good shelter.



Honeman's Rock picnic area

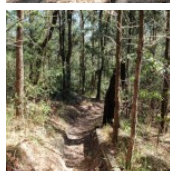
Honeman's Rock picnic area is a large picnic area at the top end of Island View Drive. This picnic area has a couple of large grassy areas, composting toilets, free electric BBQs, picnic tables, shelters, garbage bins, drinking water and information signs. The picnic area is home to a mud brick building (available for hire) and Honeman's Rock, from which the area derives its name. There is a fair amount of parking available next the picnic area, and some extra spaces a few hundred meters down the road.



A list of paper topographical maps that cover this walk

[Gosford 1:25 000 Map Series](#)

[Gosford 1:100 000 Map Series](#)



Nearby outdoor and camping stores

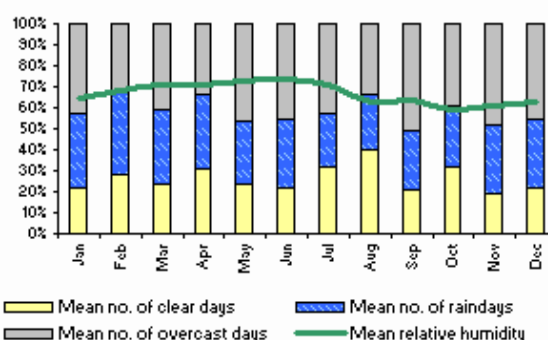
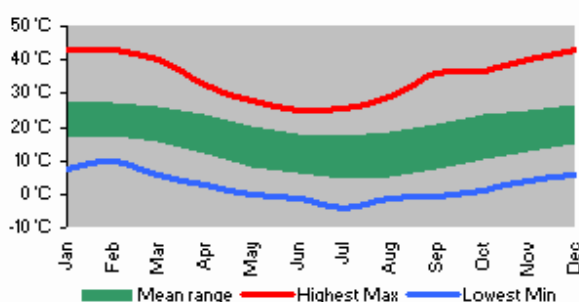
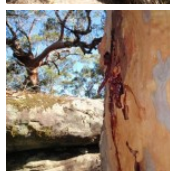
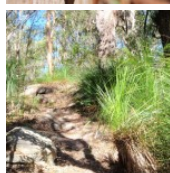
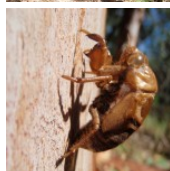
Boots Great Outdoors 201 The Entrance Rd Erina (02) 4367 0396

Mannings Sports 172 Mann St Gosford (02) 4325 1617

Camping World Shop 18, 482 Pacific Hwy Wyoming (02) 4324 6515

BCF Australia Pty Ltd 354 Manns Rd Gosford West (02) 4322 5833

Kangaroo Tent City & BBQs Homemakers Supa Centre Cnr Wyong Rd & Bryant Drv Tuggerah (02) 4353 4335



This space is available for advertising

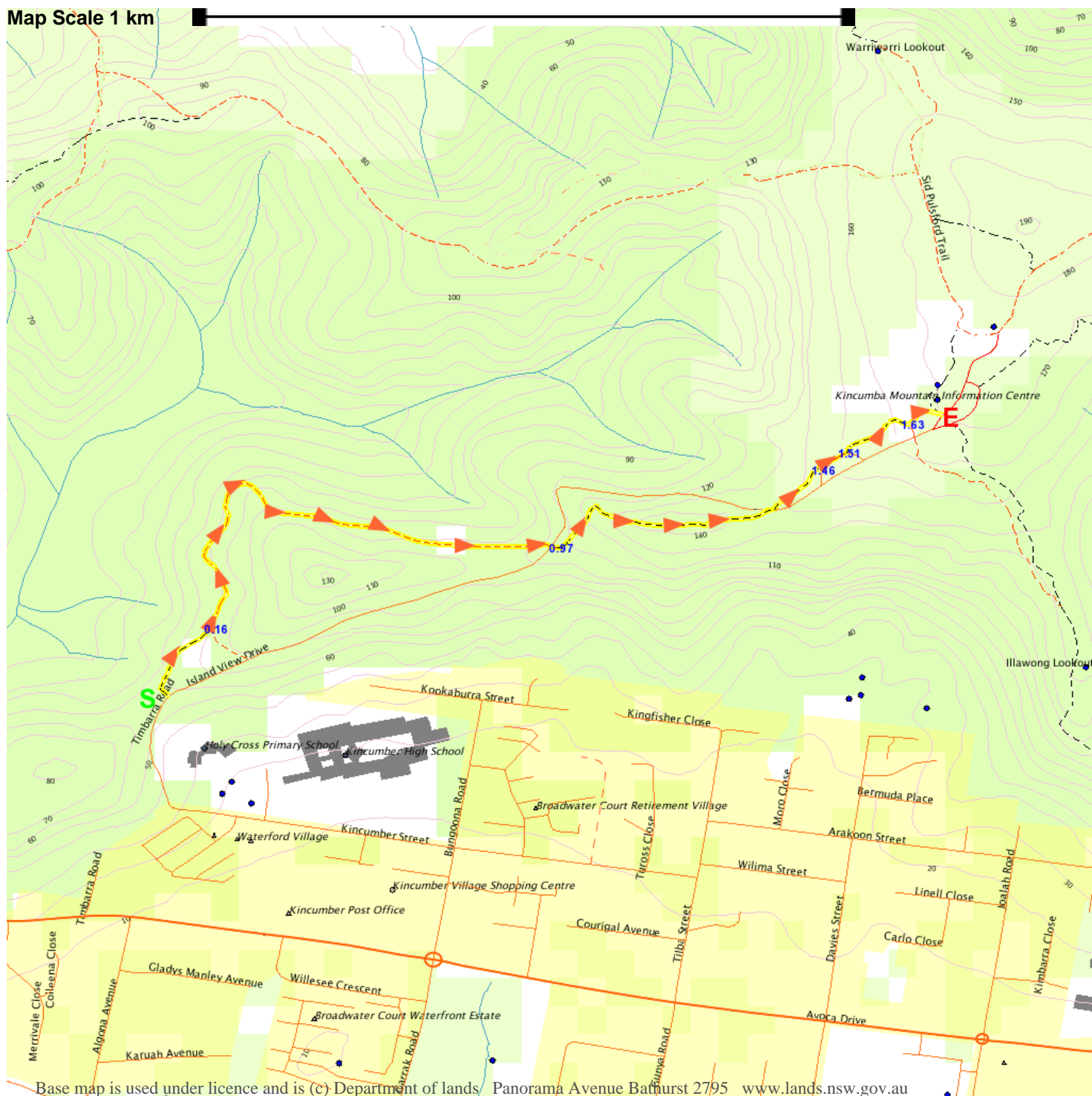
Full colour
Great photos

Give the joy of walking to a friend
(and support wildwalks)

www.wildwalks.com/books.html

A walk for every body

Map Scale 1 km



Base map is used under licence and is (c) Department of lands Panorama Avenue Bathurst 2795 www.lands.nsw.gov.au

