

The Oaks Picnic Area is the starting point for this long walk across the ridge line linking to Woodford. The Oaks Fire Trail winds its way over the hills, with many views into the surrounding valleys and bush land. This is a great walk to start extending your walking distance and stamina, while enjoying a scenic track. It does follow a management trail and is popular with mountain bike riders.

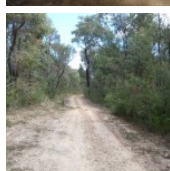
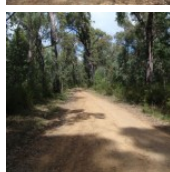
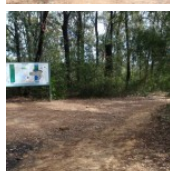
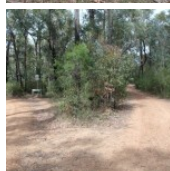
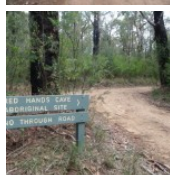
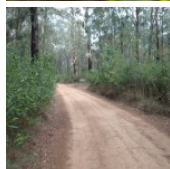
Blue Mountains National Park

**Length:** 18.1 km  
**Time:** 7 hrs  
**Climb:** 800 m  
**Style:** One way  
**Rating:** Track: Hard  
**Where:** 11.5 km SE of Woodford  
**Transport:** car train bus



Visit [www.wildwalks.com](http://www.wildwalks.com) for more info

*Side trips and Alternate routes mentioned in these notes are not included in the tracks overall rating, distance or time estimate. The notes only describe the side trips and Alternate routes in one direction. Allow extra time for resting and exploring areas of interest. Please ensure you and your group are well prepared and equipped for all possible hazards and delays. The authors, staff and owners of wildwalks take care in preparing these notes but will not accept responsibility for any inconvenience, loss or injury sustained by using these notes or maps. Please take care and share your experience through the website. Please check park closures, weather information and Fire Danger Rating just before leaving for your walk. Walk maybe closed during Total Fire Ban. GPS for start the start of this walk:-33.8116,150.5652 & for the end:-33.7358,150.4823*



## National Parks Association of NSW - Learn more about the NPA [www.npansw.org.au](http://www.npansw.org.au)

Walk with a club - Enjoy bushwalking and make new friends (community announcement)

The NPA is more than just a bushwalking club. We are a conservation group that helps protect natural places. As a member you can join any of our 1000 guided walks each year and enjoy our quarterly Magazine 'Nature NSW'. Membership fee is just \$65 per year, concession fee also available. [Learn More...](#)

## The Oaks Picnic Area

The Oaks Picnic Area, is an established picnic area with shelter, bench seats and a pit toilet. The picnic area also boasts a water tank and adequate parking. It is a quiet area, just off the road, making it a fantastic spot for a rendezvous with family and friends after a long walk or ride.

## The Oaks Picnic Area to Int. Wheel Gully Trail and Oaks Firetrail 6km 1 Hrs 55 mins

(From S) From the car park, the walk heads along the management trail, with the picnic area on the right and car park to the left. The walk heads down the road for a very short time to the signposted intersection.

Veer left: From the intersection, the walk heads past the Red Hand Cave intersection and west along the management trail, with the picnic area on the right and car park to the left. The walk heads down the road for a very short time, to the signposted intersection.

Continue straight: From the intersection, the walk does not head in the direction of 'Nepean lookout' but leads to the gate and fence up the other trail.

Continue straight: From the intersection, the walk heads up the slight hill, passing the gate. The trail winds slowly as it climbs the gentle slope for quite some time. The trail then flattens out and leads to a steeper gradient, and at the top, comes to a '15km to Woodford' sign.

Continue straight: From the sign, the walk continues upwards along the trail, winding slowly for some kilometres. The vegetation either side of the trail stays relatively the same, passing some clearings with demolished trees in them. As the trail begins to head north, it continues to wind uphill, passing a large clearing on the left. Soon after the large clearing, the walk comes to an intersection on the right, before the track turns left sharply.

## Int. Wheel Gully Trail and Oaks Firetrail to Int. in Wheel Gully loop 0.2km 4 mins **Optional Side Trip:**

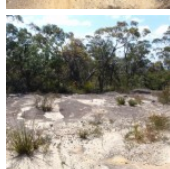
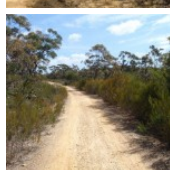
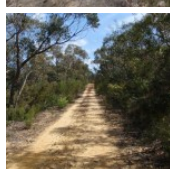
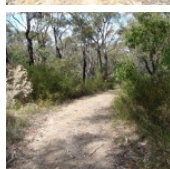
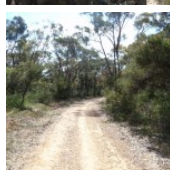
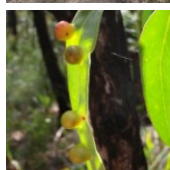
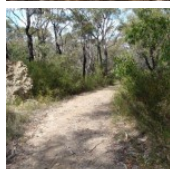
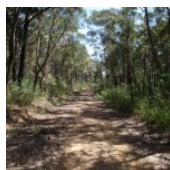
(From 6.03 km) Turn right: From the intersection, the walk heads down the hill, almost immediately coming to a split in the track, with both tracks heading down the hill.

Continue straight: From the intersection the track heads down the left or right track to wind around and down to a dam. From the dam the track winds back up either track to the intersection.

(Retrace your steps back to the main track, then turn right to continue along this walk.)

## Wheel Gully

Wheel Gully has a management trail which loops down to a large dam. It is a nice shady place to stop for a bite to eat along the Oaks Fire Trail. This site is also used as an informal campsite with no facilities. The water in the dam is not suitable for drinking, nor is it reliable. Carry enough water.



## Int. Wheel Gully Trail and Oaks Firetrail to Int. Oaks Firetrail and cliff lookout Trk 7.9km 2 Hrs 40 mins

(From 6.03 km) Continue straight: From the intersection the track heads around the corner turning left. The track then winds, while undulating onto a plateau that has low vegetation. On this plateau the track is bordered by rocky surfaces on either side for a short time as it winds for a short time before heading down hill. The track heads down hill to continue into a saddle where a gate marks the intersection to the right.

Continue straight: From the intersection, the walk heads up the hill to the north, winding steeply up past a rock shelf with a view (on the left). The track continues steeply uphill, then winds across a plateau with rocky surfaces to both sides of the track. The vegetation here is also lower and sparser, giving views of the surrounding valleys. The track winds across this plateau and hillsides for some time before descending steeply, passing a blue marker sign on the right before coming to the intersection with St Helena Ridge Trail.

Continue straight: From the intersection, the walk heads down across the saddle and tends right below the cliff (above on the left). The trail winds up and onto a plateau lined with rocks, which look as though they could have been placed there. The vegetation along this higher area is lower and clearer, which gives views across the distant ridge lines. The walk continues to head in a northerly direction and descends right, off the plateau, to head up another hill to a stepped intersection on the left.

## Int. Oaks Firetrail and cliff lookout Trk to Cliff lookout 0.1km 3 mins **Optional Side Trip:**

(From 13.91 km) Turn left: From the intersection, the walk heads away from the management trail, with the small depression (or waterhole) on the left, surrounded by reeds. The track winds up the hill, following the gap in the vegetation, leading to a rock shelf with a view.

(Retrace your steps back to the main track, then turn left to continue along this walk.)

### Cliff Lookout

Cliff lookout, an unofficially-named, informal view point, is a dramatic cliff edge perched just above the trees. The cliff is unfenced. The view across the valley provides a pleasant panorama.

## Int. Oaks Firetrail and cliff lookout Trk to Int. Oaks Firetrail and Old Bathurst Rd 3.5km 1 Hrs 10 mins

(From 13.91 km) Continue straight: From the intersection, this walk heads in a northerly direction down the hill, turning steeply up and to the left a few times. The trail passes a small dam (just to the right) and continues to wind and undulate for some time to a mound of dirt in the middle of a junction. The trail passes this mound of dirt and continues north, winding and undulating slightly for some time before passing an interpretative board (on the right). Soon after this, the trail comes up to a gate (with a tap for drinking water, on the right). The track crosses over this gate to the intersection with the road.

## Int. Oaks Firetrail and Old Bathurst Rd to Woodford Station 0.7km 15 mins

(From 17.38 km) Turn left: From the intersection, the walk heads uphill along Taylor Rd, and soon turns right onto Parker St. The walk follows Parker St, tending right, then turns onto The Appian Way. The walk turns left at Railway Pde, just before a bridge. Continuing down Railway Pde, keeping the railway line on the right, the walk comes to a shelter on the left and railway sign on the right. The walk follows the footpath under the Woodford Station sign, leading under the tracks and up stairs onto the platform.

## A list of paper topographical maps that cover this walk

[Springwood](#) 1:25 000 Map Series

[Penrith](#) 1:25 000 Map Series

[Jamison](#) 1:25 000 Map Series

[Katoomba](#) 1:25 000 Map Series

Penrith 1:100 000 Map Series

Katoomba 1:100 000 Map Series





# The Oaks Picnic area to Woodford Station

## Join Australia's largest Bushwalking Club

• Explore new places • Make new friends • Over 1000 guided walks every year  
Join NPA in 2012 and receive a free bushwalking guide book.

bushwalks@npansw.org.au

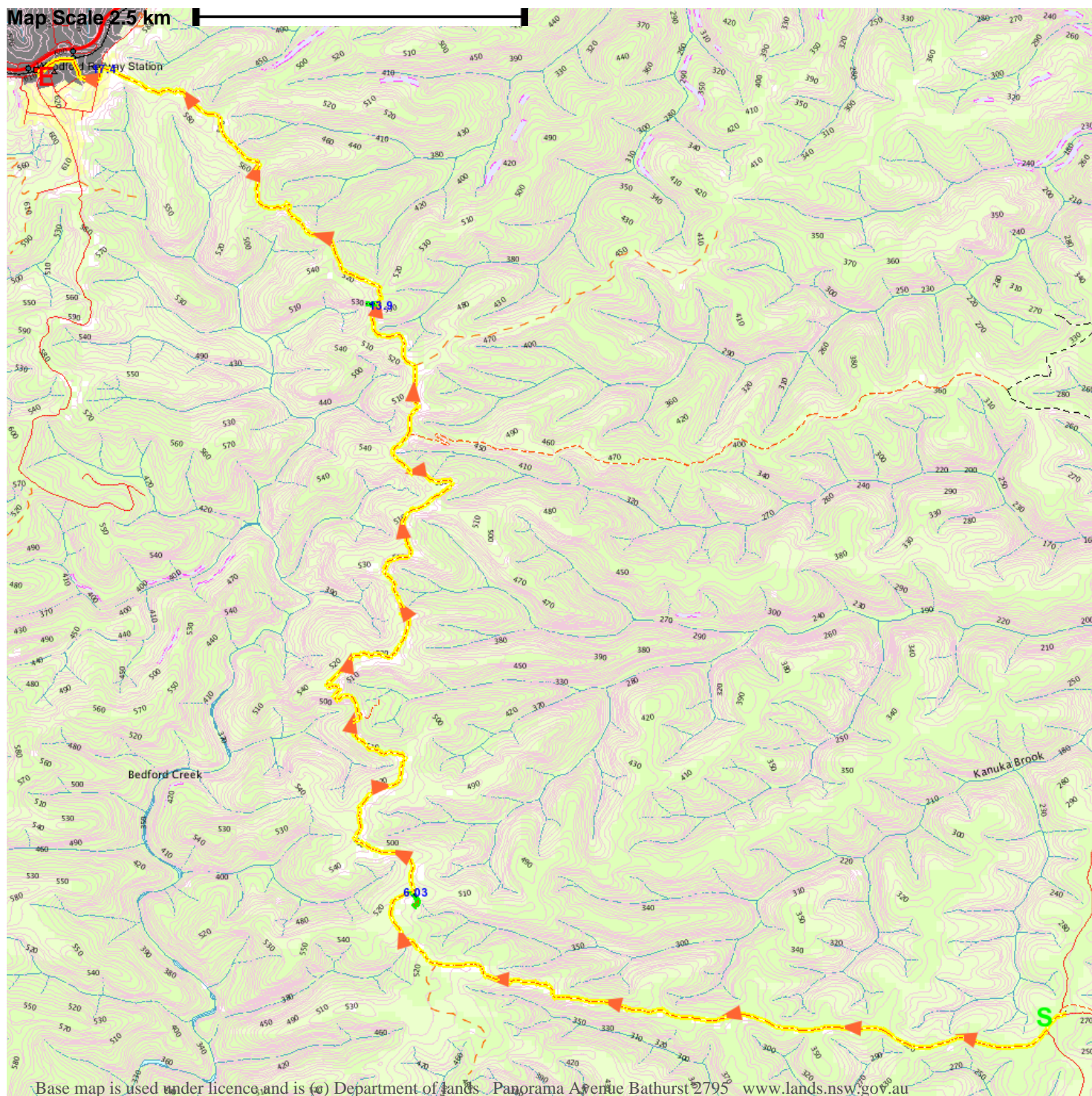
www.npansw.org.au

(02) 9299 0000

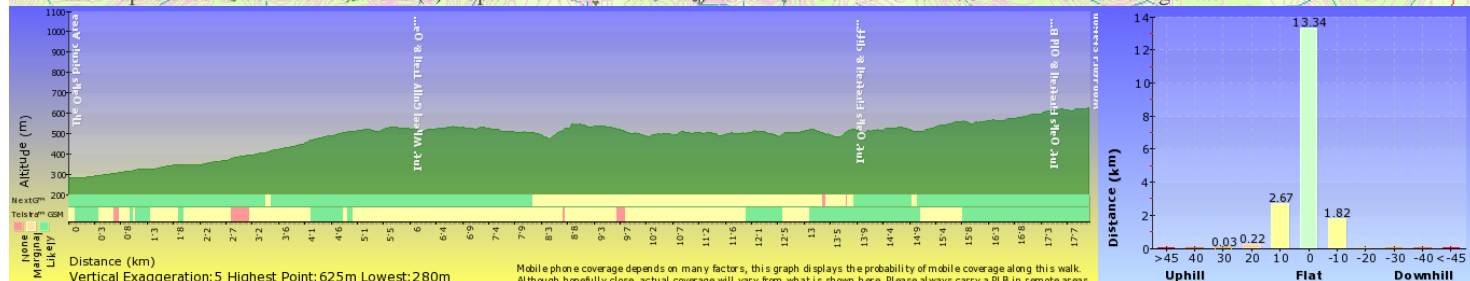
Photo: © Henry Gold



Map Scale 2.5 km



Base map is used under licence, and is © Department of Lands, Panorama Avenue Bathurst 2795 www.lands.nsw.gov.au



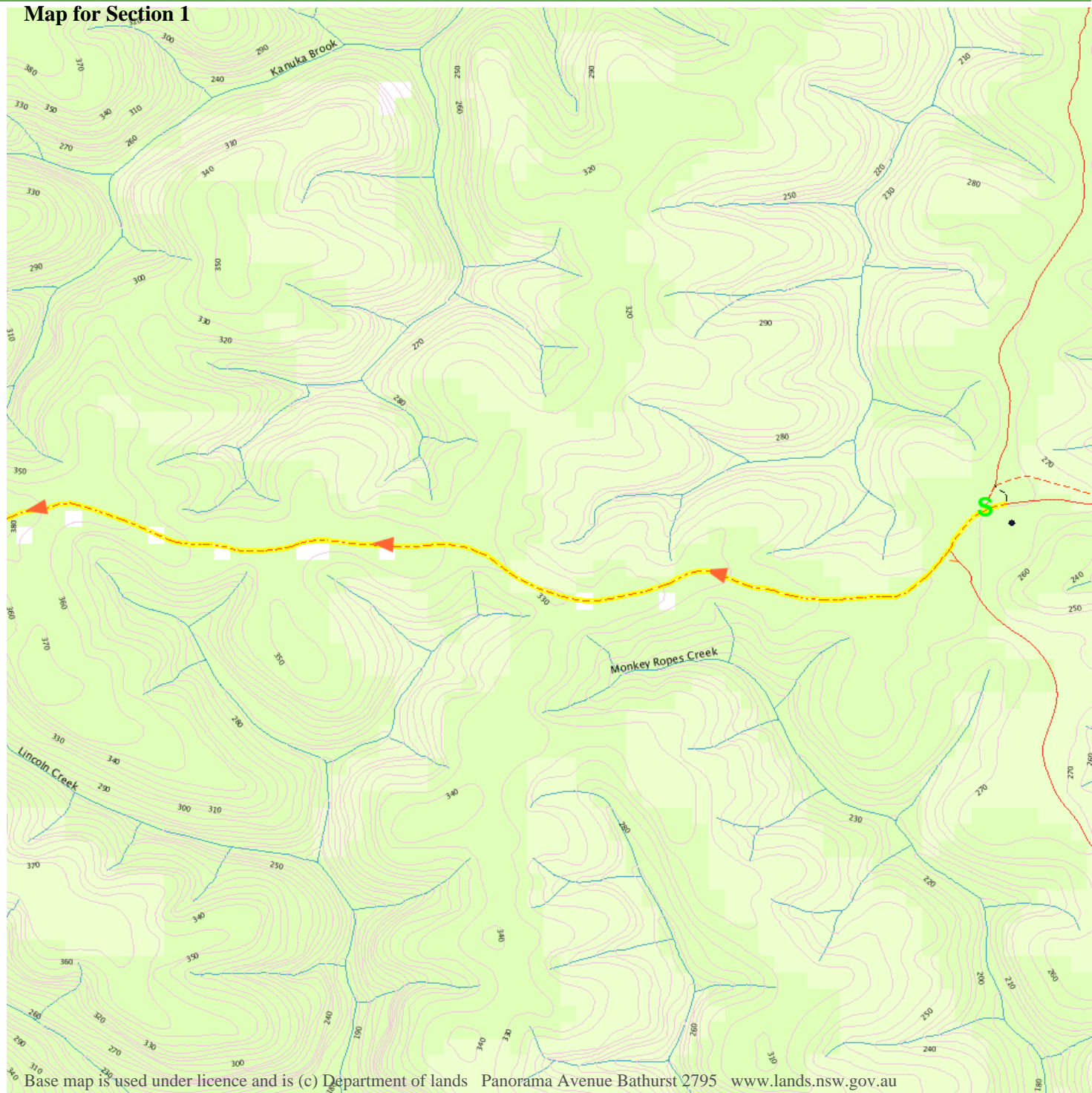




wild  
walks

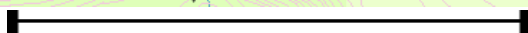
# The Oaks Picnic area to Woodford Station

Map for Section 1



Base map is used under licence and is (c) Department of lands Panorama Avenue Bathurst 2795 [www.lands.nsw.gov.au](http://www.lands.nsw.gov.au)

Map Scale 1 km

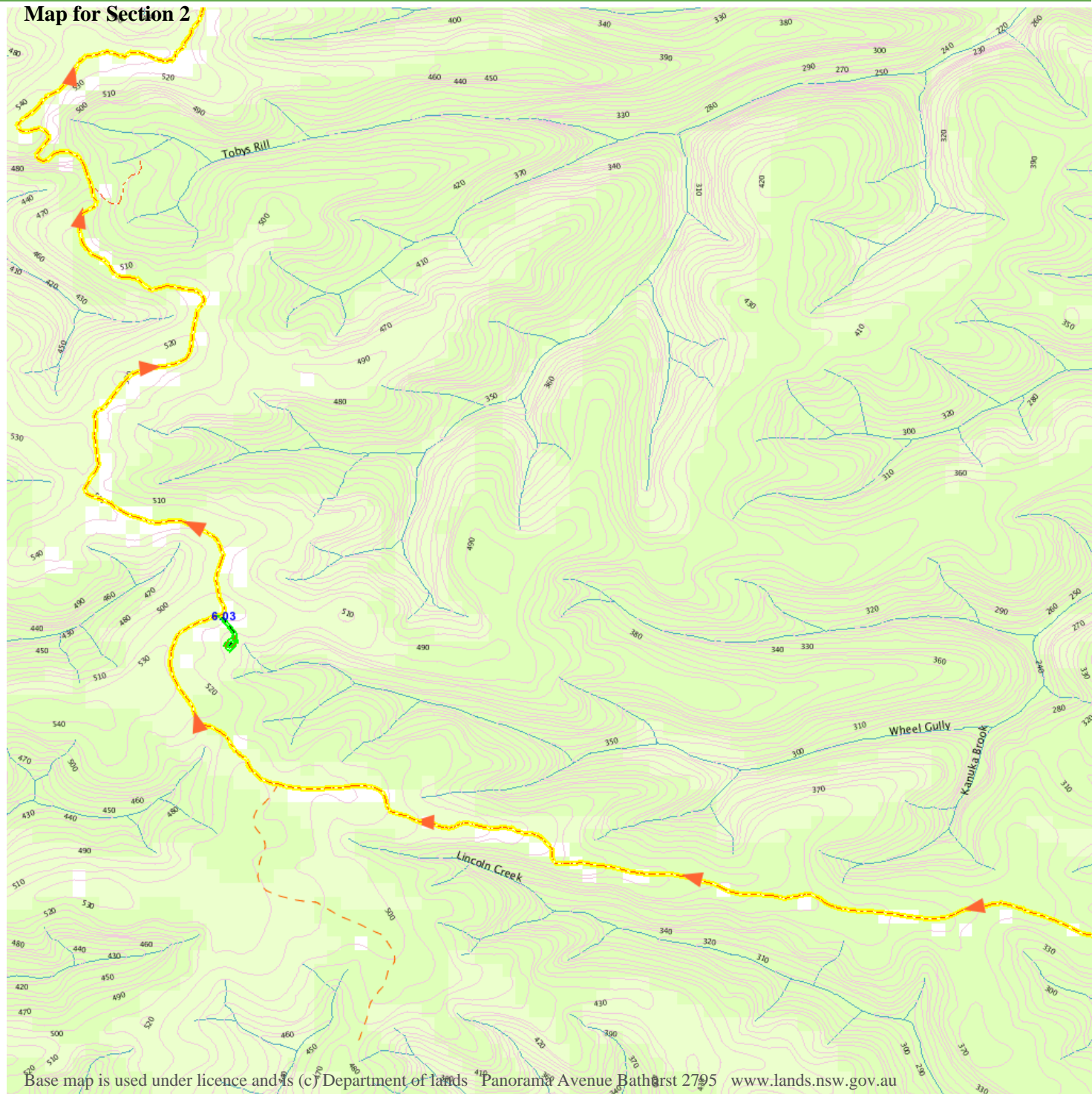




wild  
walks

# The Oaks Picnic area to Woodford Station

Map for Section 2



Base map is used under licence and is (c) Department of lands Panorama Avenue Bathurst 2795 [www.lands.nsw.gov.au](http://www.lands.nsw.gov.au)

Map Scale 1 km



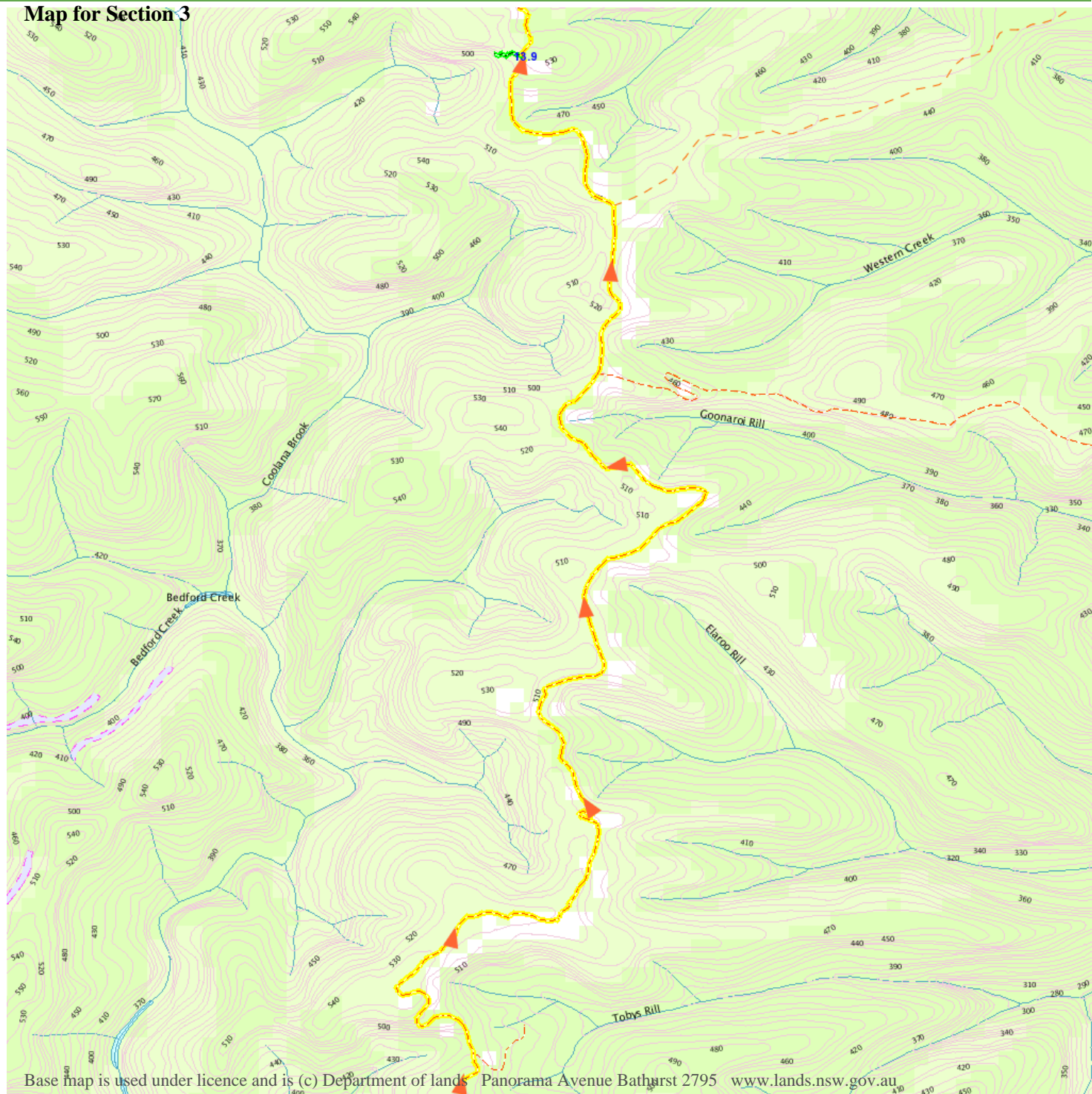




wild  
walks

# The Oaks Picnic area to Woodford Station

Map for Section 3



Base map is used under licence and is (c) Department of lands Panorama Avenue Bathurst 2795 [www.lands.nsw.gov.au](http://www.lands.nsw.gov.au)

Map Scale 1 km

## Join Australia's largest Bushwalking Club

• Explore new places • Make new friends • Over 1000 guided walks every year  
Join NPA in 2012 and receive a free bushwalking guide book.

[bushwalks@npansw.org.au](mailto:bushwalks@npansw.org.au)

[www.npansw.org.au](http://www.npansw.org.au)

(02) 9299 0000

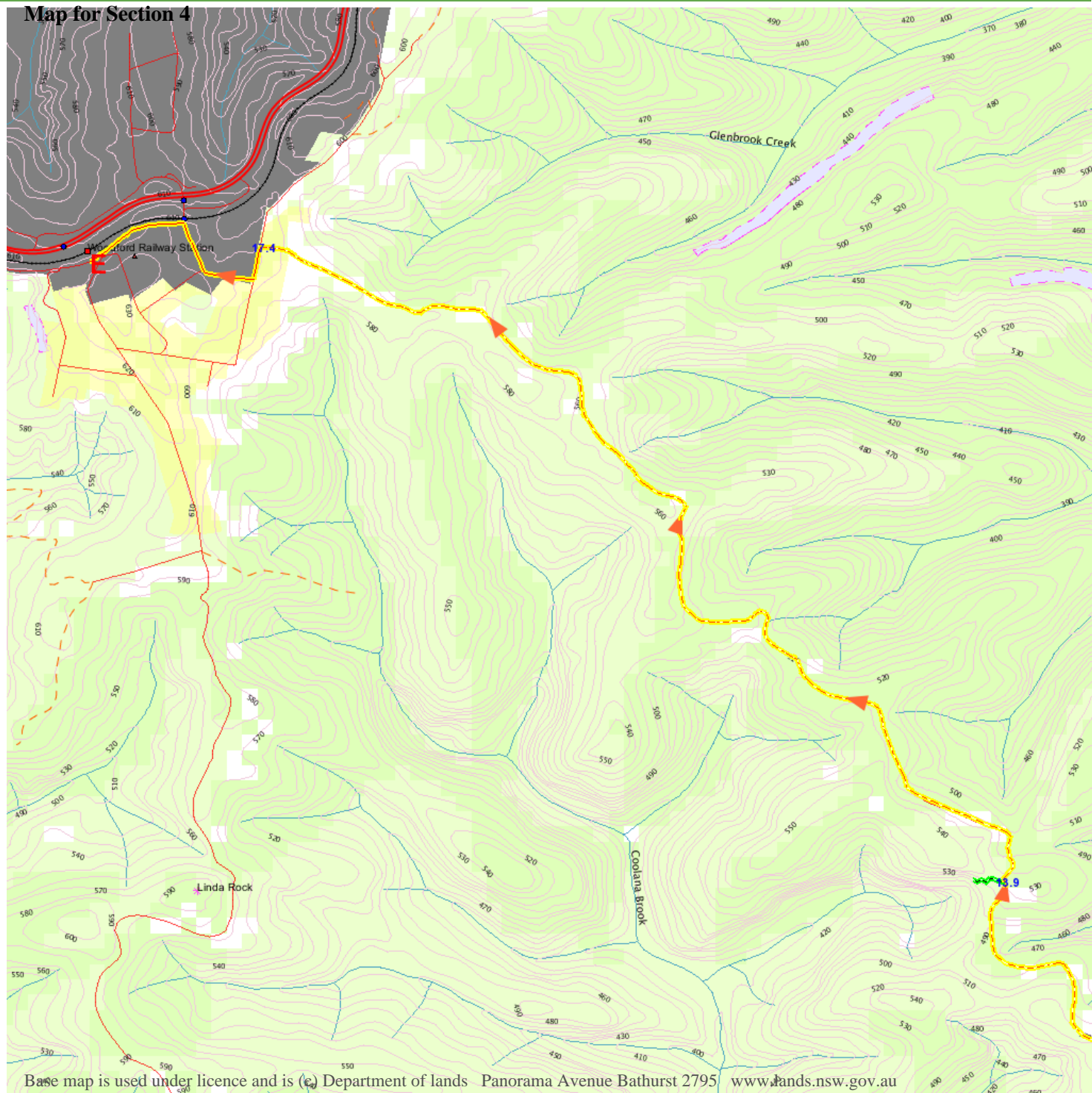
Photo: © Henry Gold





# The Oaks Picnic area to Woodford Station

Map for Section 4



Map Scale 1 km

## Join Australia's largest Bushwalking Club

• Explore new places • Make new friends • Over 1000 guided walks every year  
Join NPA in 2012 and receive a free bushwalking guide book.

[bushwalks@npansw.org.au](mailto:bushwalks@npansw.org.au)

[www.npansw.org.au](http://www.npansw.org.au)

(02) 9299 0000

Photo: © Henry Gold

