



This walk allows for a greater appreciation of the hills in the Glenbrook area. Starting with a view of the half-way point, Lost World's Lookout, from Martin's Lookout, you can appreciate the task ahead. The walk involves a steep descent and climb through the Glenbrook Valley. A great way to see both sides of the valley, with the unique memorial plaques on opposite sides of the valley. A great walk for the fit.

Blue Mountains National Park

Length: 5.4 km
Time: 3 hrs 30 mins
Climb: 504 m
Style: Return
Rating: Route: Hard
Where: 3.9 km S of Valley Heights
Transport: car



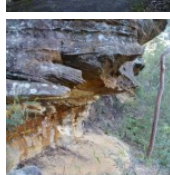
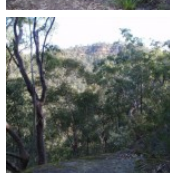
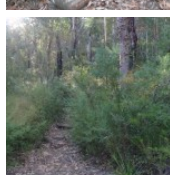
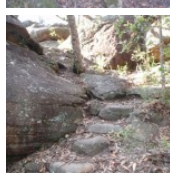
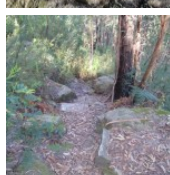
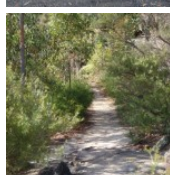
Visit www.wildwalks.com for more info

Side trips and Alternate routes mentioned in these notes are not included in the tracks overall rating, distance or time estimate. The notes only describe the side trips and Alternate routes in one direction. Allow extra time for resting and exploring areas of interest. Please ensure you and your group are well prepared and equipped for all possible hazards and delays. The authors, staff and owners of wildwalks take care in preparing these notes but will not accept responsibility for any inconvenience, loss or injury sustained by using these notes or maps. Please take care and share your experience through the website.

Please check park closures, weather information and Fire Danger Rating just before leaving for your walk. Walk maybe closed during Total Fire Ban.

GPS for start and end of this walk: -33.7341, 150.5761

This walk passes through a remote area and sections have no visible track. At least one person in your group should have training and experience in off track walking and navigation. Even with these notes and a GPS these extra skills and equipment are required.



Wildwalks

Download the free [Bushwalk Australia eMag](http://bushwalkaustralia.com)

The eMagazine is produced by the community at bushwalk.com and the Wildwalks team

[Bushwalk.com](http://bushwalk.com) Australia's most active bushwalking forum - Check it out.

Happy Reading. Matt :)

Martins Lookout Carpark to Martins Lookout 0.1km 3 mins

(From S) From the car park, the walk heads through the cable opening in the low fence, and follows the clear sandy path past the rocky outcrop, on the left. The track winds for a short time to come around a rock outcrop with a pole (without a sign) marking the intersection, on the right.

Veer left: From the intersection, the walk heads across the hillside, keeping the valley and view to the right. The track continues to soon lead out to the unfenced rock platform that forms Martin's Lookout.

Martins Lookout

Martin's Lookout is an unfenced view on the rim of the plateau, south of Valley Heights. There are views across and up the Glenbrook Creek, and to the Lost Worlds lookout (on the opposite cliffs) which features a small white crucifix. This cross is in memory of Rev. Raymer who was an avid bushwalker in the area. The plaque in the rock at Martin's Lookout is directly opposite this cross.

Martins Lookout to Bunyan Lookout 1.5km 1 Hrs

(From 0.09 km) Turn left: From Martins Lookout, the track heads south-east around the rocky knoll, with the views to the right of the track. The track quickly comes off the sandstone surface and descends stairs which zigzag under the cliffs. The walk passes under many overhangs, some of which overhang the track as it makes its way down the hillside. Tightly winding its way down the hill, the track descends a final flight of stairs to the signposted intersection.

Turn left: From the intersection, the walk follows the 'Bunyan Lkt' post down the stairs. The walk soon meets the creek and turns left, following the creek for a short distance before crossing at an opening in the shrubs around the creek. From here, the walk follows the cairns (rock stacks) across creek flats before climbing the hill to the base of a small cliff line. At one point beneath the cliff line, the walk ducks through a hole in the rock, then winds up through boulders, following more cairns. The walk continues up the hill, passing through a few more rocky outcrops to reach the informal, unfenced Bunyan Lookout, in a clearing near the cliff line.

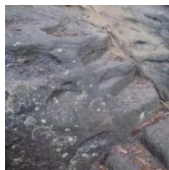
Bunyan Lookout

Bunyan Lookout is an large, unfenced sandstone platform overlooking the Glenbrook Creek valley. Behind the lookout, there is a small sandy clearing, big enough for a few tents. The lookout spans across Glenbrook Creek and sandstone cliffs of the valley.

Bunyan Lookout to Lost Worlds Lookout 1.1km 20 mins

(From 1.57 km) Turn sharp right: From Bunyan Lookout, the walk heads back into the clearing behind the unfenced cliff line and turns left at the cairn (if you head down into the valley, you have gone the wrong way). The walk meanders through the heath for a short time before coming to a red painted stump, on the right of the track.

Turn right: From the red stump intersection, the walk follows the 'Lost Worlds' sign up the small hill. The walk winds through the bush for a short time then crosses a rocky surface. The track then leaves the rocky surface briefly to return to a similar rock surface with a white crucifix on the edge of the cliff.



Lost Worlds Lookout

Lost Worlds Lookout is a cliff edge marked by a cross. The cross commemorates the Rev. Raymer who was a prominent bushwalker in the area, and has been commemorated by a plaque at Martins Lookout across the valley. The lookout views Glenbrook Creek valley below, the surrounding cliffs and down to Penrith in the west.

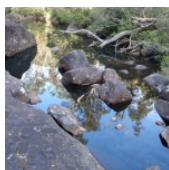
This is a 'Return' style walk - retrace your steps back to the beginning when you are ready.



A list of paper topographical maps that cover this walk

[Springwood](#) 1:25 000 Map Series

Penrith 1:100 000 Map Series



Nearby outdoor and camping stores

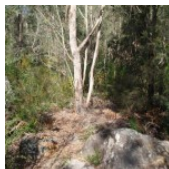
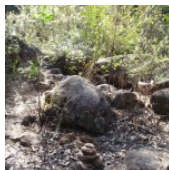
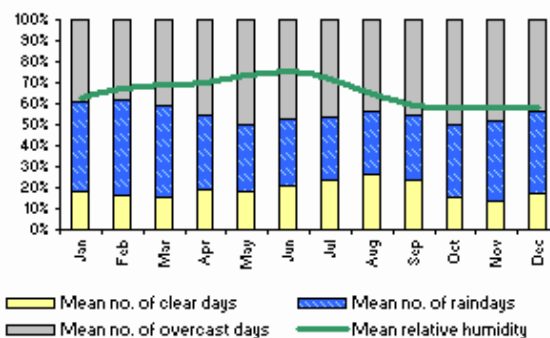
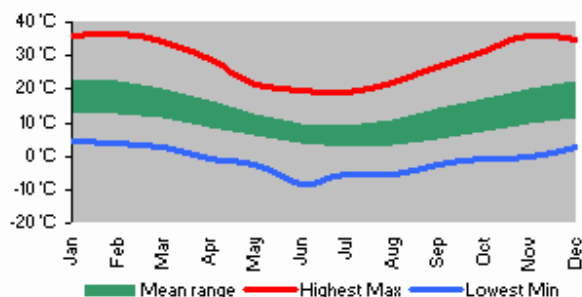
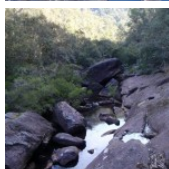
Summit Gear 11 Ross St Glenbrook (02) 4739 4373

Boots Great Outdoors Shop 25 Home Centre Wolseley St Penrith (02) 4733 5744

Kangaroo Tent City Cnr Mulgoa & Blaikie Rds Penrith (02) 4733 4111

Getaway Disposals 549 High St Penrith (02) 4732 2285

Mitchell Adventure 24 Henry St Penrith (02) 4731 8482



This space is available for advertising



Full colour
Great photos



Give the joy of walking to a friend
(and support wildwalks)

www.wildwalks.com/books.html



A walk for every body



Map Scale 1 km



Base map is used under licence and is (c) Department of lands Panorama Avenue Bathurst 2795 www.lands.nsw.gov.au

