



Although the train tunnel is closed to the public, this short walk does give you a view of the eastern (bricked up) entrance of the tunnel. The first half of the walk follows the sandstone cuttings where the train once went. For the second half of the walk to the tunnel, you walk on the Northern side of the cutting, giving you a view into the man-made gully.

Blue Mountains National Park

Length: 1.4 km
Time: 1 Hr
Climb: 133 m
Style: Return
Rating: Track: Moderate
Where: 5.8 km WSW of Penrith
Transport: bus car



Visit www.wildwalks.com for more info



Side trips and Alternate routes mentioned in these notes are not included in the tracks overall rating, distance or time estimate. The notes only describe the side trips and Alternate routes in one direction. Allow extra time for resting and exploring areas of interest. Please ensure you and your group are well prepared and equipped for all possible hazards and delays. The authors, staff and owners of wildwalks take care in preparing these notes but will not accept responsibility for any inconvenience, loss or injury sustained by using these notes or maps. Please take care and share your experience through the website. Please check park closures, weather information and Fire Danger Rating just before leaving for your walk. Walk maybe closed during Total Fire Ban. GPS for start and end of this walk: -33.7669,150.6405

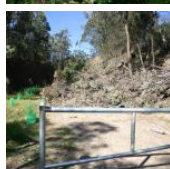
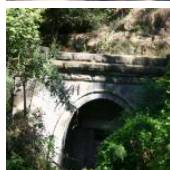


Wildwalks

Download the free [Bushwalk Australia eMag](http://bushwalk.com.au)

The eMagazine is produced by the community at bushwalk.com and the Wildwalks team
[Bushwalk.com](http://bushwalk.com) Australia's most active bushwalking forum - Check it out.

Happy Reading. Matt :)



Water tank to Tunnel 0.7km 20 mins

(From S) If driving from Sydney take the Lapstone exit from the Great Western Hwy (it is not far past the end of the freeway). Park in the large dirt parking area near the water tanks on the right, soon after taking the exit.

From the Reservoir car park, this walk heads around the gate (which limits access to the old rail train cutting). The walk follows this cutting, where tracks once stood. When the walk comes to a track which crosses the main track, where the sandstone walls are only about 1m high, then the walk steps up to the right and follows the track that continues in the same westerly direction but high on the cutting (the main cutting gets very wet and overgrown, and would be difficult to follow). Before long, the track comes to another intersection, with a view of the tunnel entrance. It is possible to walk over the top of the tunnel entrance and look down along the cutting, with care. There is no access to the tunnel. Once finished, return the same way.

This is a 'Return' style walk - retrace your steps back to the beginning when you are ready.

A list of paper topographical maps that cover this walk

[Penrith 1:25 000 Map Series](#)

[Penrith 1:100 000 Map Series](#)

Nearby outdoor and camping stores

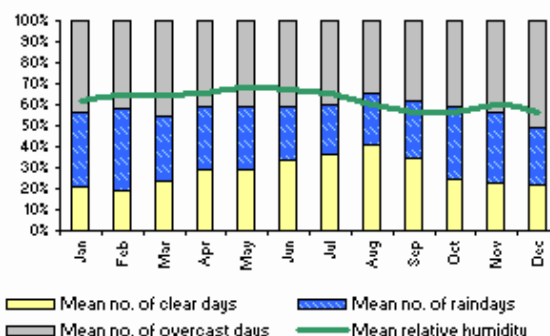
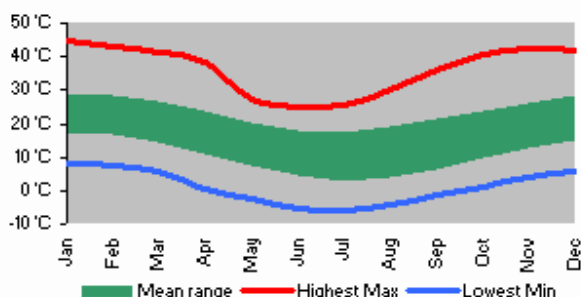
Summit Gear 11 Ross St Glenbrook (02) 4739 4373

Boots Great Outdoors Shop 25 Home Centre Wolseley St Penrith (02) 4733 5744

Kangaroo Tent City Cnr Mulgoa & Blaikie Rds Penrith (02) 4733 4111

Getaway Disposals 549 High St Penrith (02) 4732 2285

Mitchell Adventure 24 Henry St Penrith (02) 4731 8482



This space is available for advertising

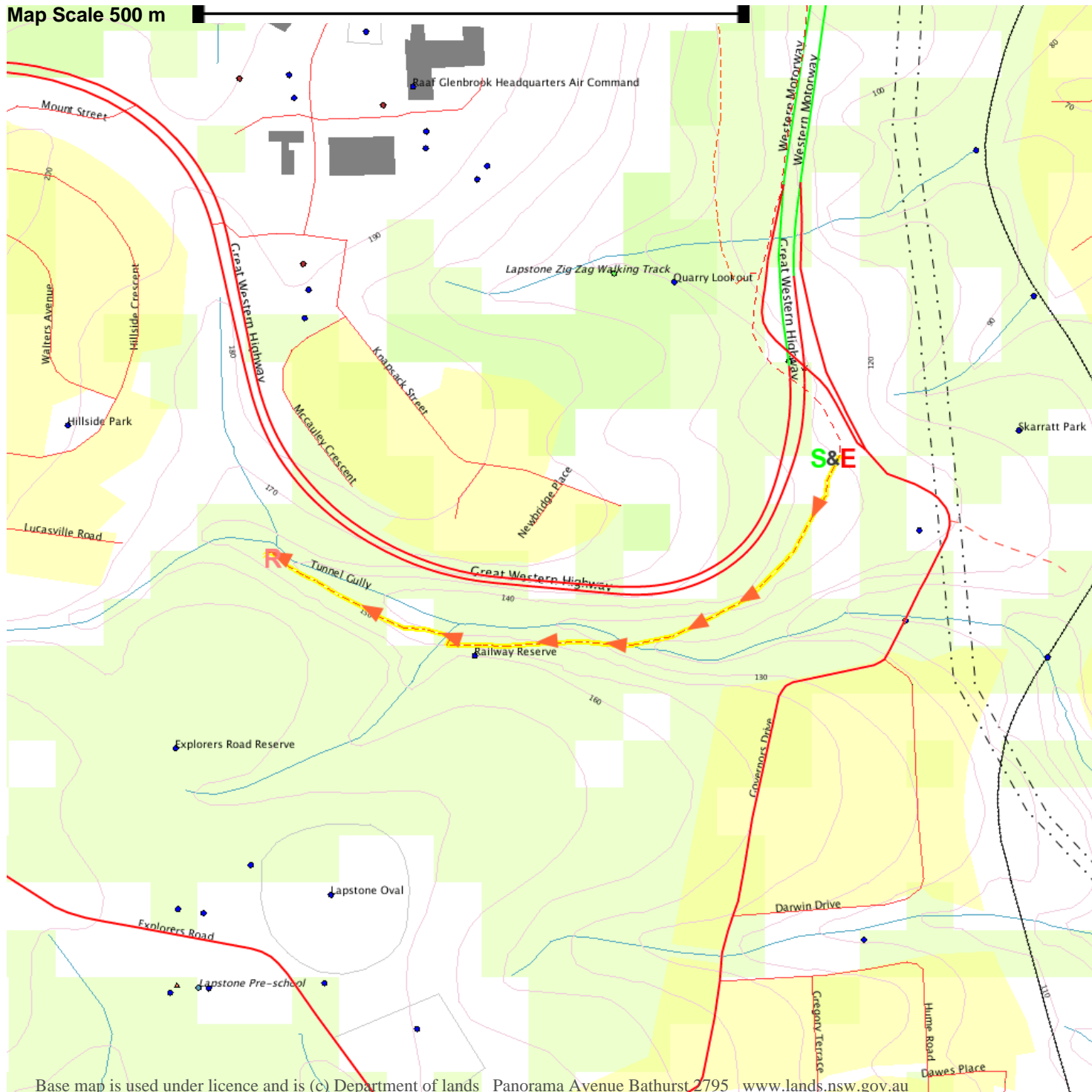
Full colour
Great photos

Give the joy of walking to a friend
(and support wildwalks)

www.wildwalks.com/books.html

A walk for every body

Map Scale 500 m



Base map is used under licence and is (c) Department of lands Panorama Avenue Bathurst 2795 www.lands.nsw.gov.au

