

This walk offers a great way to see the Nepean River and marvel at the mouth of Glenbrook Gorge. Starting from Lapstone Station, the walk travels alongside the Nepean River to the junction with Glenbrook Creek. The area is filled with large boulders, pools and many neat spots to explore before returning to Lapstone.

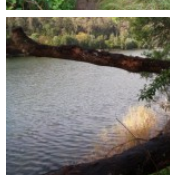
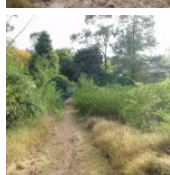
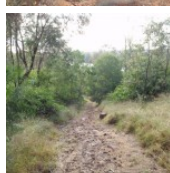
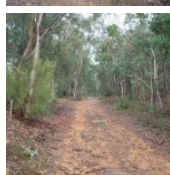
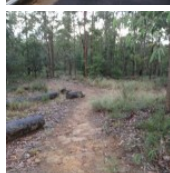
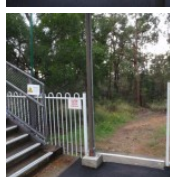
Blue Mountains National Park

Length: 3.2 km
Time: 1 hr 30 mins
Climb: 172 m
Style: Return
Rating: Track: Hard
Where: 0.3 km ENE of Lapstone
Transport: train bus car



Visit www.wildwalks.com for more info

Side trips and Alternate routes mentioned in these notes are not included in the tracks overall rating, distance or time estimate. The notes only describe the side trips and Alternate routes in one direction. Allow extra time for resting and exploring areas of interest. Please ensure you and your group are well prepared and equipped for all possible hazards and delays. The authors, staff and owners of wildwalks take care in preparing these notes but will not accept responsibility for any inconvenience, loss or injury sustained by using these notes or maps. Please take care and share your experience through the website. Please check park closures, weather information and Fire Danger Rating just before leaving for your walk. Walk maybe closed during Total Fire Ban. GPS for start and end of this walk: -33.7733,150.6428



Wildwalks

Download the free [Bushwalk Australia eMag](http://bushwalk.com.au)

The eMagazine is produced by the community at bushwalk.com and the Wildwalks team
[Bushwalk.com](http://bushwalk.com) Australia's most active bushwalking forum - Check it out.

Happy Reading. Matt :)

Lapstone

The historic town of Lapstone is the eastern-most town in the Blue Mountains. The small township has a railway station, which is shared with the bordering town of Leonay. The station offers a public telephone and toilet. There are no commercial facilities in the area. The name 'Lapstone' is said to have come from the 'many water-worn stones in the area', which resemble the lapstone used by cobblers when making shoes.

Platform 2 Lapstone Station to Int. Station trk and Tunnel Gully trk 0.1km 1 mins

(From S) From Lapstone Station, the walk heads down the hill away from the station and town. The track soon meets a management trail.

Int. Station trk and Tunnel Gully trk to Int. Tunnel Gully trk and car wreck trk 0.1km 2 mins

(From 0.05 km) Turn right: From the intersection, the walk heads downhill along the trail, keeping the station above on the right. The trail undulates a little then comes to an intersection with a track on the right, just before the trail starts to head downhill again (there is an old car wreck in the bush to the left).

Int. Tunnel Gully trk and car wreck trk to Lapstone lookout 0.2km 5 mins Optional Side Trip:

(From 0.17 km) Turn right: From the intersection, the walk follows the single track away from the clear management trail. The track crosses the hillside and leads across the depression of a creek to rise onto a small ridge, and in intersection with a track on the left.

Turn left: From the intersection, the track leads down the ridgeline, keeping the houses and railway behind and the creek below on the left. The track winds down the rocky ridge to a rock surface with a view over the Nepean River. (Retrace your steps back to the main track, then turn right to continue along this walk.)

Lapstone Nepean View

This informal and unfenced view point is just below Lapstone Station. There are stunning views up and down the Nepean River and across some farmland on the Cumberland Plain. A great spot to enjoy the views.

Int. Tunnel Gully trk and car wreck trk to Int. Tunnel Gully trk and Nepean Pt trk 0.4km 10 mins

(From 0.17 km) Continue straight: From the intersection, the track heads downhill along the management trail, tending left to keep the views of the Nepean River on the right. The trail winds down the hill past a large electricity tower and about 115 metres further, comes to a small track on the right, somewhat overgrown with vines (this is just before the creek crossing).

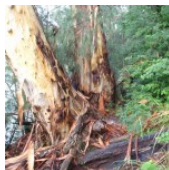
Int. Tunnel Gully trk and Nepean Pt trk to Int. at junction of Nepean River and Glenbrook Creek

1km 20 mins

(From 0.61 km) Turn right: From the intersection, the walk heads down towards the Nepean River. The track winds and undulates for quite some time along the river, which it keeps to the left. The track then comes to a section of rock where an island-like stretch of land forms in the river on the left. The track winds, climbs or walks above these rock formations, and comes to be above the junction of Glenbrook Creek and the Nepean River.

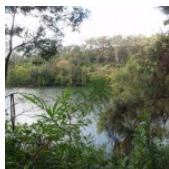
Tear & Share

www.wildwalks.com
 Bushwalking and camping



Int. at junction of Nepean River and Glenbrook Creek to Nepean Point 0.2km 2 mins **Optional Side Trip:**

(From 1.62 km) Turn left : From the intersection, the track winds down the rocky outcrop, keeping the mouth of the Glenbrook Creek behind on the right. The track winds down through the rocks onto the island-like stretch of land in the Nepean River. The track crosses many large round river stones which are slippery. The walk keeps the water close on the left as it heads out to the point.



Nepean view point

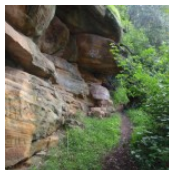
Nepean view point is an informal lookout which peers back down the Nepean River towards Penrith. The point is made from rocks deposited in the river and is now covered by trees and surrounded by reeds.

This is a 'Return' style walk - retrace your steps back to the beginning when you are ready.

A list of paper topographical maps that cover this walk

[Penrith](#) 1:25 000 Map Series

Penrith 1:100 000 Map Series



Nearby outdoor and camping stores

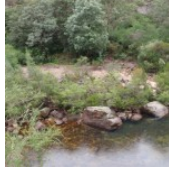
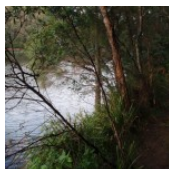
Summit Gear 11 Ross St Glenbrook (02) 4739 4373

Boots Great Outdoors Shop 25 Home Centre Wolseley St Penrith (02) 4733 5744

Kangaroo Tent City Cnr Mulgoa & Blaikie Rds Penrith (02) 4733 4111

Getaway Disposals 549 High St Penrith (02) 4732 2285

Mitchell Adventure 24 Henry St Penrith (02) 4731 8482



This space is available for advertising



Full colour
Great photos



Give the joy of walking to a friend
(and support wildwalks)

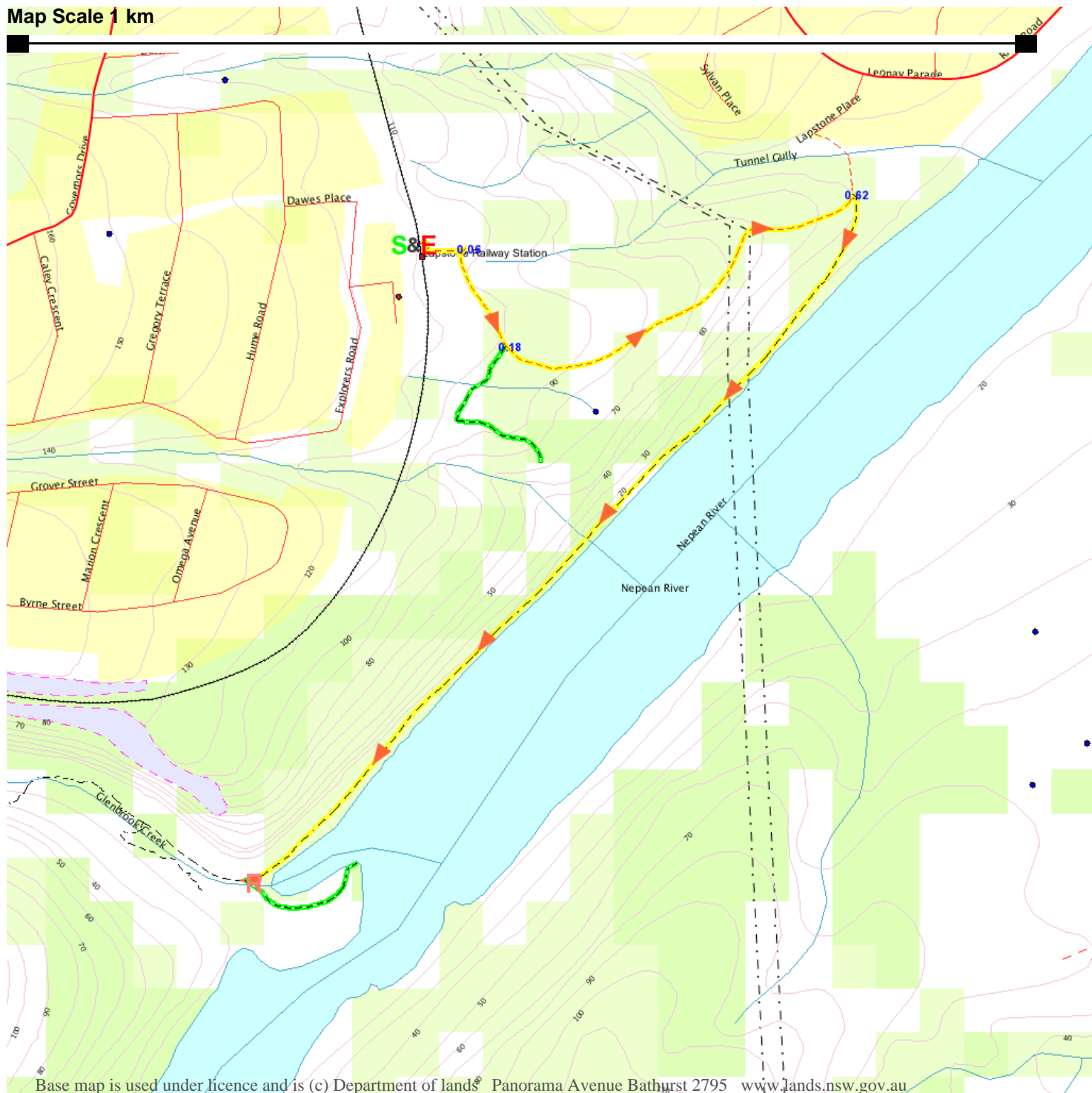
www.wildwalks.com/books.html



A walk for every body



Map Scale 1 km



Base map is used under licence and is (c) Department of lands Panorama Avenue Bathurst 2795 www.lands.nsw.gov.au

