



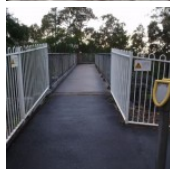
This short walk to Lapstone Lookout is easily accessed from Lapstone train station. So next time you miss your train, take the short walk down to the lookout and view the Nepean River and surrounding lands. Lapstone Lookout is a great place to pass some time while enjoying a view.

Blue Mountains National Park

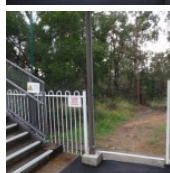
Length: 0.8 km
Time: 30 mins
Climb: 43 m
Style: Return
Rating: Track: Hard
Where: 0.3 km ENE of Lapstone
Transport: train bus car



Visit www.wildwalks.com for more info



Side trips and Alternate routes mentioned in these notes are not included in the tracks overall rating, distance or time estimate. The notes only describe the side trips and Alternate routes in one direction. Allow extra time for resting and exploring areas of interest. Please ensure you and your group are well prepared and equipped for all possible hazards and delays. The authors, staff and owners of wildwalks take care in preparing these notes but will not accept responsibility for any inconvenience, loss or injury sustained by using these notes or maps. Please take care and share your experience through the website. Please check park closures, weather information and Fire Danger Rating just before leaving for your walk. Walk maybe closed during Total Fire Ban. GPS for start and end of this walk: -33.7733,150.6428

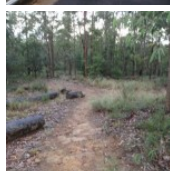


Wildwalks

Download the free [Bushwalk Australia eMag](http://bushwalk.com.au)

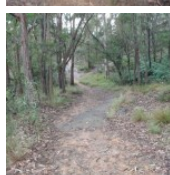
The eMagazine is produced by the community at bushwalk.com and the Wildwalks team
[Bushwalk.com](http://bushwalk.com) Australia's most active bushwalking forum - Check it out.

Happy Reading. Matt :)



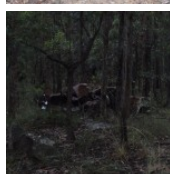
Lapstone

The historic town of Lapstone is the eastern-most town in the Blue Mountains. The small township has a railway station, which is shared with the bordering town of Leonay. The station offers a public telephone and toilet. There are no commercial facilities in the area. The name 'Lapstone' is said to have come from the 'many water-worn stones in the area', which resemble the lapstone used by cobblers when making shoes.



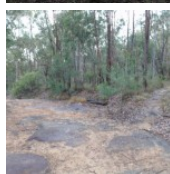
Platform 2 Lapstone Station to Int. Station trk and Tunnel Gully trk 0.1km 1 mins

(From S) From Lapstone Station, the walk heads down the hill away from the station and town. The track soon meets a management trail.



Int. Station trk and Tunnel Gully trk to Int. Tunnel Gully trk and car wreck trk 0.1km 2 mins

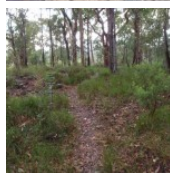
(From 0.05 km) Turn right: From the intersection, the walk heads downhill along the trail, keeping the station above on the right. The trail undulates a little then comes to an intersection with a track on the right, just before the trail starts to head downhill again (there is an old car wreck in the bush to the left).



Int. Tunnel Gully trk and car wreck trk to Lapstone lookout 0.2km 5 mins

(From 0.17 km) Turn right: From the intersection, the walk follows the single track away from the clear management trail. The track crosses the hillside and leads across the depression of a creek to rise onto a small ridge, and in intersection with a track on the left.

Turn left: From the intersection, the track leads down the ridgeline, keeping the houses and railway behind and the creek below on the left. The track winds down the rocky ridge to a rock surface with a view over the Nepean River.



Lapstone Nepean View

This informal and unfenced view point is just below Lapstone Station. There are stunning views up and down the Nepean River and across some farmland on the Cumberland Plain. A great spot to enjoy the views.

This is a 'Return' style walk - retrace your steps back to the beginning when you are ready.

A list of paper topographical maps that cover this walk

[Penrith 1:25 000 Map Series](#)

[Penrith 1:100 000 Map Series](#)



This space is available for advertising

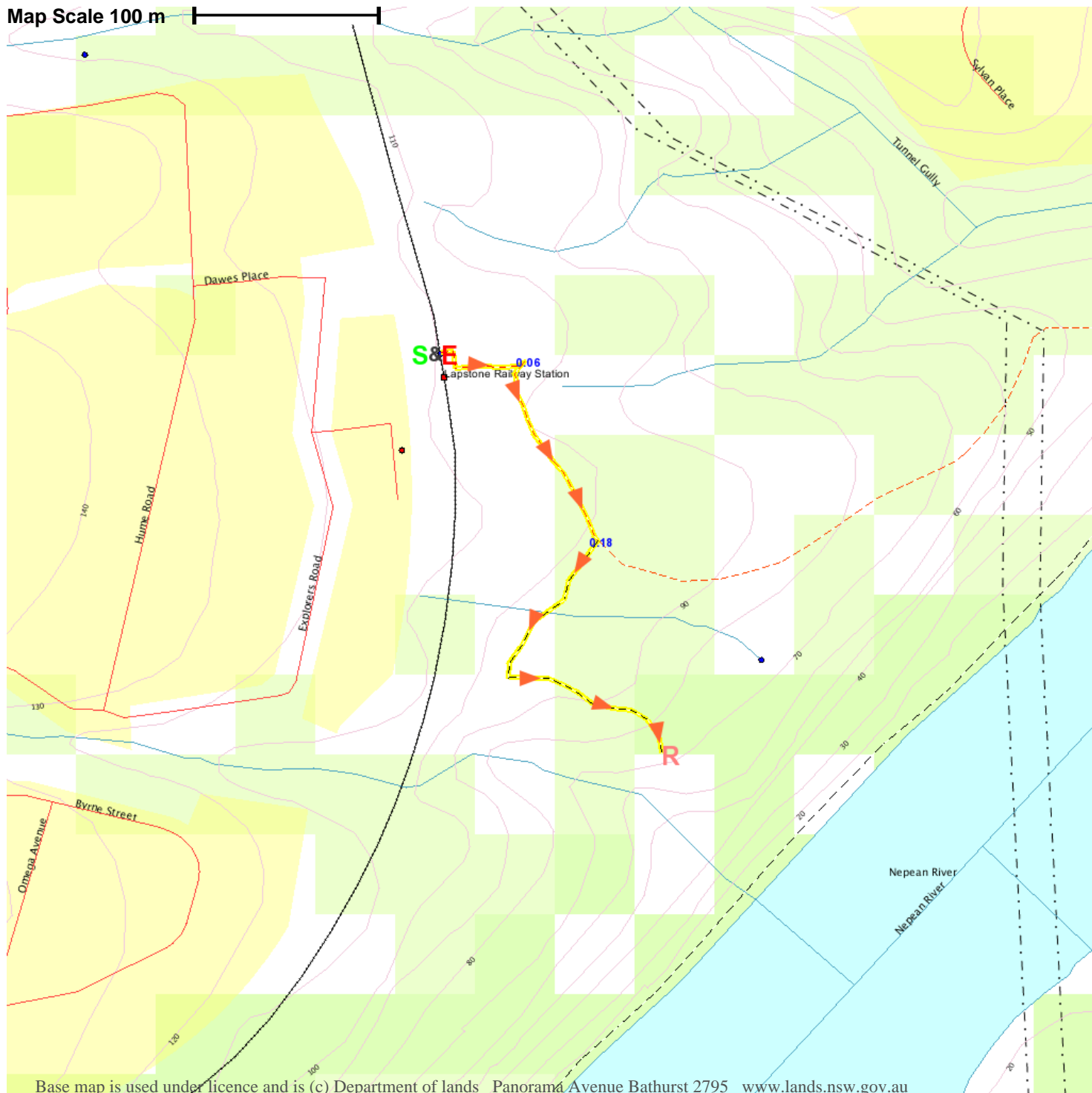
Full colour
Great photos

Give the joy of walking to a friend
(and support wildwalks)

www.wildwalks.com/books.html

A walk for every body

Map Scale 100 m



Base map is used under licence and is (c) Department of lands Panorama Avenue Bathurst 2795 www.lands.nsw.gov.au

