



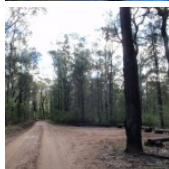
This walk takes a steep climb down from Pisgah Rock to the Junction of Erskine and Lincoln Creeks. There are optional side trips to a rock platform further downstream, or to the campsite just up from the junction (you can make a weekend of the walk). This remote Creek junction is a lovely spot to relax and enjoy.

Blue Mountains National Park

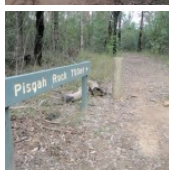
Length: 2.8 km
Time: 3 hrs
Climb: 261 m
Style: Return
Rating: Route: Unmanaged
Where: 8 km SSW of Glenbrook
Transport: car



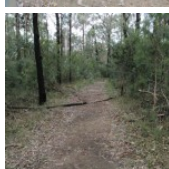
Visit www.wildwalks.com for more info



Side trips and Alternate routes mentioned in these notes are not included in the tracks overall rating, distance or time estimate. The notes only describe the side trips and Alternate routes in one direction. Allow extra time for resting and exploring areas of interest. Please ensure you and your group are well prepared and equipped for all possible hazards and delays. The authors, staff and owners of wildwalks take care in preparing these notes but will not accept responsibility for any inconvenience, loss or injury sustained by using these notes or maps. Please take care and share your experience through the website. Please check park closures, weather information and Fire Danger Rating just before leaving for your walk. Walk maybe closed during Total Fire Ban. GPS for start and end of this walk: -33.8285,150.5717

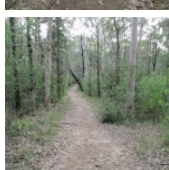


This walk passes through a remote area and sections have no visible track. At least one person in your group should have training and experience in off track walking and navigation. Even with these notes and a GPS these extra skills and equipment are required.



National Parks Association of NSW - Learn more about the NPA www.npansw.org.au

Walk with a club - Enjoy bushwalking and make new friends (community announcement)
 The NPA is more than just a bushwalking club. We are a conservation group that helps protect natural places
 As a member you can join any of our 1000 guided walks each year and enjoy our quarterly Magazine 'Nature NSW'.
 Membership fee is just \$65 per year, concession fee also available. [Learn More...](#)



Pisgah Rock track head to Pisgah Rock Intersection 0.8km 10 mins

(From S) From the Pisgah Rock car park (2.2km further along Nepean Lookout Fire Trail from the Oaks Picnic Area), this walk follows the 'Pisgah Rock 700m' sign along the old management trail. The track meanders through the Eucalypt and Casuarina forest as it climbs a gentle hill and then heads down the other side. The track soon comes to an intersection with a small bush track off to the left, from the intersection there are glimpses of the valley views.



Pisgah Rock Intersection to Pisgah Rock 0km 1 mins

(From 0.76 km) Veer left: From the intersection this walk takes the short bush track toward the view of the valley. The track comes to the unfenced cliff and great view from the top of Pisgah Rock and a sign posted 'take care when walking near cliffs'.



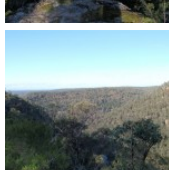
Pisgah Rock

Pisgah Rock, is a short walk from Nepean Lookout Fire Trail in the lower Blue Mountains, and provides excellent views up Erskine Creek Gorge. The informal lookout is not fenced, and the surface is uneven with large crevasse like cracks. The view is simply amazing, with great views right up the middle of Erskine Creek Gorge. There are also great views to the left, down Erskine Creek Gorge and across the flats of the southern parts for greater Sydney. The rock presumably derives its name from the height point on Mount Nebo, where the Bible reports Moses seeing the promised land for the first time. In Hebrew pisgah refers to a high place. This Pisgah Rock is very much a high place, with great views.



Pisgah Rock to Junction of Erskine and Lincoln Crks 0.6km 20 mins

(From 0.78 km) Turn right: From the 'take care when walking near cliffs' signpost on Pisgah Rock this walk now follows the rock at the top of the cliff keeping the valley below to the left. After passing a couple of very steep looking cracks in the rock, the faint track comes to a much more gentle looking pass with a large Banksia growing out of it. The walk heads down through this pass. The track turns right and heads down a much steeper climb through the V in the rock. At the bottom of this climb the bush track leads to a small unfenced rock platform. The walk then turns right heading down the couple more climbs then turns left back under the rock platform. The track continues to wind down several more steep rocky climbs following a faint track and cairns. after most climbs the track generally tends left and down hill. After the last climb, the track heads away from the cliff making, tending left heading fairly steeply to an intersection near the junction of Erskine Creek and Lincoln Creek.



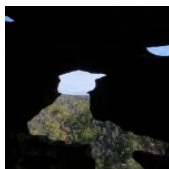
Junction of Erskine and Lincoln Creeks

The junction of Erskine and Lincoln Creeks, in the Blue Mountains National park, occurs at a large rock platform. The rock platform contains many water holes, a few large square boulders and a few short cascades. There are breath taking views up looking Erskine Creek Gorge. Looking up to the escarpment, to the north east, there is a view of Pisgah Rock. This area floods after rain, but when water levels are normal, this can be a lovely place to rest and enjoy the creeks and gorge.



Junction of Erskine and Lincoln Creeks to Lower Lincoln Campsite 0.1km 2 mins **Optional Side Trip:**

(From 1.38 km) Turn right: From the intersection, this walk cross Lincoln Creek at the rock pools staying upstream of the small cascade (this may be impassable after rain). On the other side of the creek the walk picks up a faint track heading gently up the ridge. Soon the track opens up into a large campsite with some wonderful grass trees.



Lower Lincoln Campsite

This well established campsite is found about 60m up the spur, south west of the junction of Lincoln and Erskine Creek. The large campsite has enough room for 6-10 tents and has an established campfire with log seats. The campsite is set among some lovely eucalypt and grass trees. Water from both creeks should be treated before drinking. If this campsite is full, there are a few alternative smaller sites in the area, one further up the hill, and another down by Erskine Creek.



Junction of Erskine and Lincoln Creeks to Rock platform 0.3km 5 mins **Optional Side Trip:**

(From 1.38 km) Continue straight: From the intersection, this walk head downstream along Erskine Creek, keeping the creek to the right. After following the indistinct bush track for a short while it leads to an large open rock platform. The walk continues along the rock until coming to the edge of a large pool at the bottom of the cascades.



Rock Platform

This is a rock platform on Erskine creek about 200m downstream from the junction with Lincoln Creek. The area does flood so depending on water levels this is usually a large rock platform with some interesting water holes, and a lovely cascade flowing into a shallow pool. Although this lacks the majestic view up Erskine Creek (found a short distance upstream), this spot does provide an open spot, great for a snack, lunch and to rest.

This is a 'Return' style walk - retrace your steps back to the beginning when you are ready.

A list of paper topographical maps that cover this walk

[Penrith 1:25 000 Map Series](#)

[Penrith 1:100 000 Map Series](#)



Nearby outdoor and camping stores

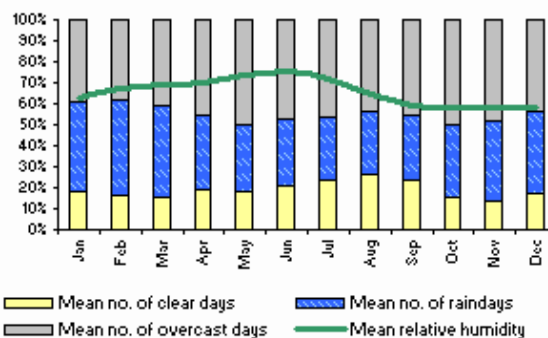
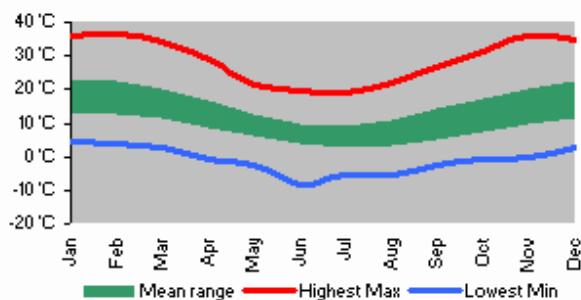
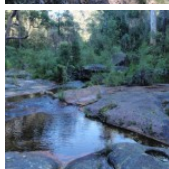
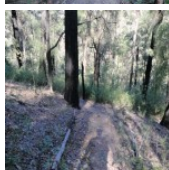
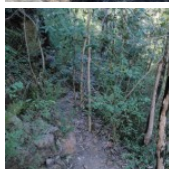
Summit Gear 11 Ross St Glenbrook (02) 4739 4373

Boots Great Outdoors Shop 25 Home Centre Wolseley St Penrith (02) 4733 5744

Kangaroo Tent City Cnr Mulgoa & Blaikie Rds Penrith (02) 4733 4111

Getaway Disposals 549 High St Penrith (02) 4732 2285

Mitchell Adventure 24 Henry St Penrith (02) 4731 8482



Join Australia's largest Bushwalking Club

• Explore new places • Make new friends • Over 1000 guided walks every year
Join NPA in 2012 and receive a free bushwalking guide book.

bushwalks@npansw.org.au

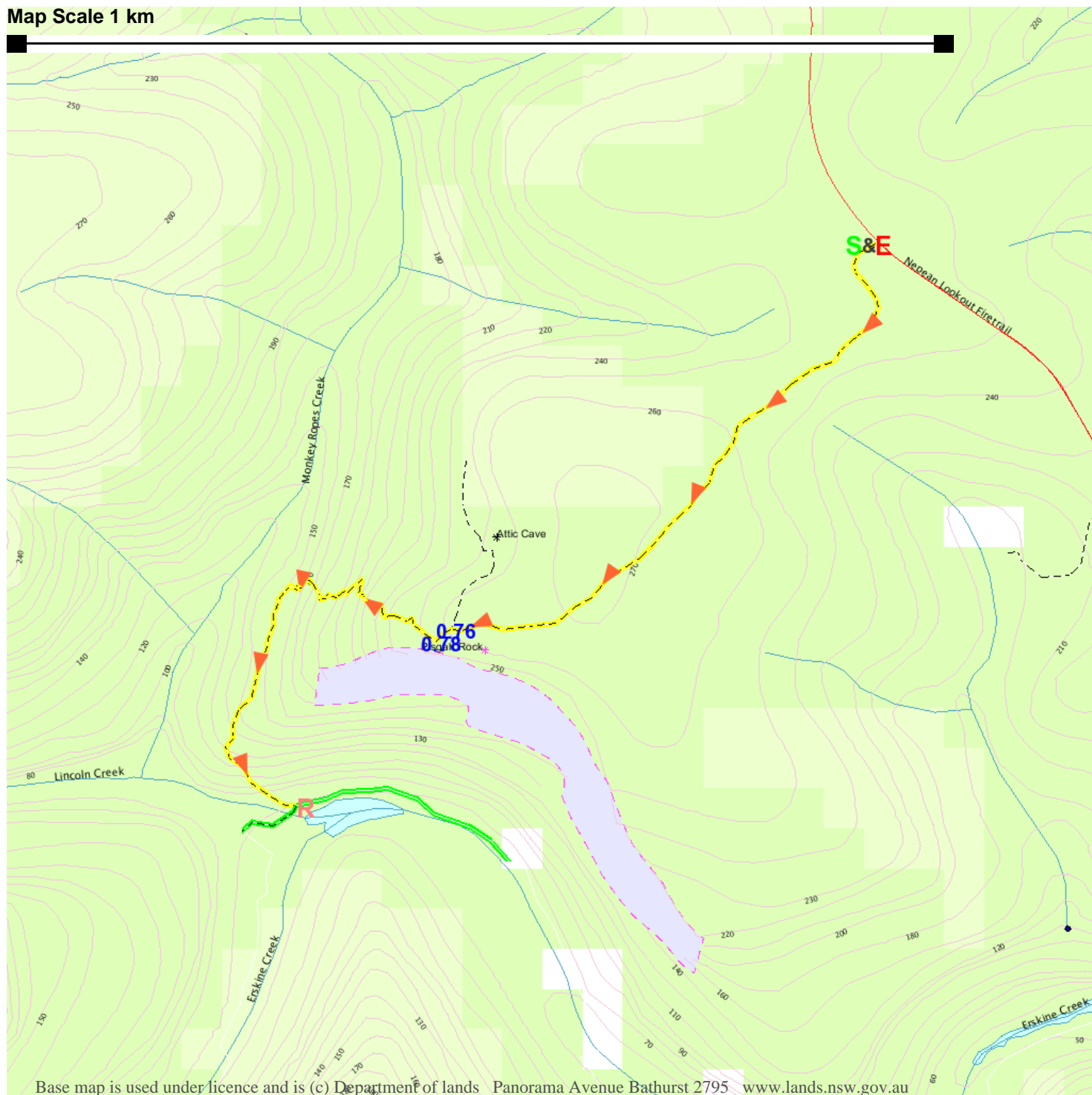
www.npansw.org.au

(02) 9299 0000

Photo: © Henry Gold



Map Scale 1 km



Base map is used under licence and is (c) Department of lands Panorama Avenue Bathurst 2795 www.lands.nsw.gov.au

