

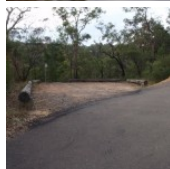
This enjoyable walk leads to the beautiful feature that is Blue Pool. This natural pool can appear an amazing colour, and can be quite popular with swimmers. If Blue Pool is too crowded for your liking, there is an optional sidetrip which heads further up the creek to Glenbrook sandbar. The sandbar offers a sandy beach at a nice stretch of creek, also a pleasant spot for a dip.

Blue Mountains National Park

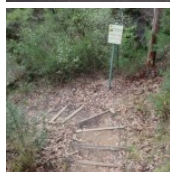
**Length:** 2.5 km  
**Time:** 1 hr 15 mins  
**Climb:** 175 m  
**Style:** Return  
**Rating:** Track: Hard  
**Where:** 1.2 km S of Glenbrook  
**Transport:** car



Visit [www.wildwalks.com](http://www.wildwalks.com) for more info



*Side trips and Alternate routes mentioned in these notes are not included in the tracks overall rating, distance or time estimate. The notes only describe the side trips and Alternate routes in one direction. Allow extra time for resting and exploring areas of interest. Please ensure you and your group are well prepared and equipped for all possible hazards and delays. The authors, staff and owners of wildwalks take care in preparing these notes but will not accept responsibility for any inconvenience, loss or injury sustained by using these notes or maps. Please take care and share your experience through the website. Please check park closures, weather information and Fire Danger Rating just before leaving for your walk. Walk maybe closed during Total Fire Ban. GPS for start and end of this walk: -33.7772,150.6185*

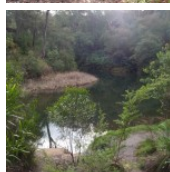
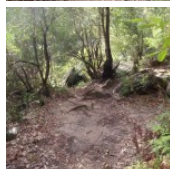


## Wildwalks

Download the free [Bushwalk Australia eMag](http://Bushwalk Australia eMag)

The eMagazine is produced by the community at [bushwalk.com](http://bushwalk.com) and the Wildwalks team  
[Bushwalk.com](http://Bushwalk.com) Australia's most active bushwalking forum - Check it out.

Happy Reading. Matt :)



## Blue Pool car park to Int. Blue Pool and Glenbrook Gorge trks 0.2km 5 mins

(From S) From the car park, the walk heads away from the road, following the direction of the 'Blue Pool' sign down the bush track. The track winds down the hill and over a small footbridge, to an un-signposted intersection.

Continue straight: From the intersection, the walk heads down the hill, via many bush steps. The walk then continues, with the creek to the left of the track, to an un-signposted intersection (where another track continues along the base of the cliffs).

## Int. Blue Pool and Glenbrook Gorge trks to Blue Pool 0.1km 1 mins Optional Side Trip:

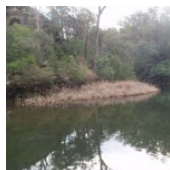
(From 0.2 km) Continue straight: From the intersection, the walk keeps the water to the left as the track meanders below the cliffs for a very short time, to the bank of Blue Pool.

(Retrace your steps back to the main track, then turn right to continue along this walk.)



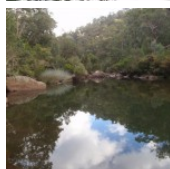
## Blue Pool

Blue Pool, Blue Mountains National Park, is named after the blue colour of the water. This appearance is caused by clay particles suspended in the water, which refract the light. This part of Glenbrook Creek is a popular swimming hole, but it is not patrolled.



## Int. Blue Pool and Glenbrook Gorge trks to Glenbrook Creek Beach 1km 25 mins

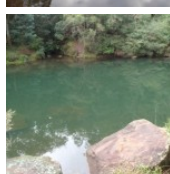
(From 0.2 km) Turn left: From the intersection, the walk heads down towards the creek, away from the cliffs. The track heads over the rocks and boulders, then crosses the creek and turns right, to keep Blue Pool on the right as the track winds above the bank. Winding and undulating near the bank of Blue Pool for some time, the track then passes a rock overhang and continues on to a large section of rock platforms. The track winds through this area, crossing the creek and continuing to the sharp right-hand bend in the creek's shoreline.



## Glenbrook Creek Sandbar

The sandbar is an unofficially-named beach on the banks of Glenbrook Creek. The beach has a fantastic white colour and some height above the water - a great spot for to camp or enjoy lunch.

This is a 'Return' style walk - retrace your steps back to the beginning when you are ready.





Full colour  
Great photos



Give the joy of walking to a friend  
(and support wildwalks)

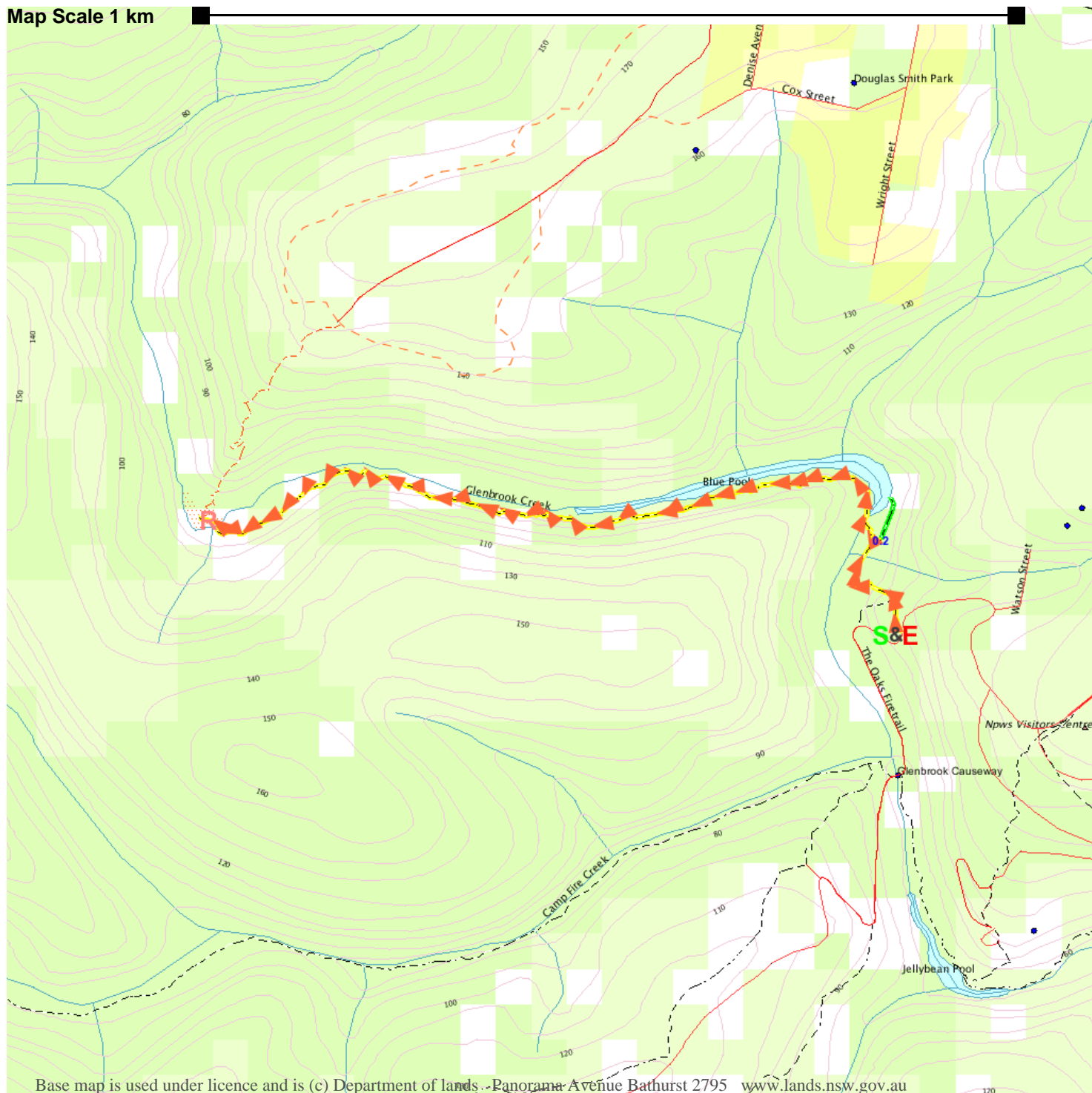
[www.wildwalks.com/books.html](http://www.wildwalks.com/books.html)



A walk for every body



Map Scale 1 km



Base map is used under licence and is (c) Department of lands - Panorama Avenue Bathurst 2795 [www.lands.nsw.gov.au](http://www.lands.nsw.gov.au)

