

This short, pleasant walk, starts close to the Glenbrook entrance of the Blue Mountains National Park. The walk follows a staircase and track down to Blue Pool. The blue colouring of the water can vary in intensity, depending on water and weather conditions. A popular swimming hole, this creek is particularly dangerous after rain, take care when swimming.

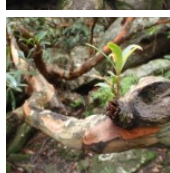
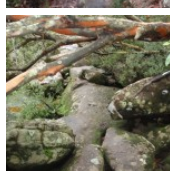
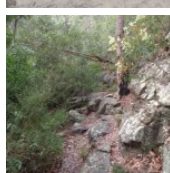
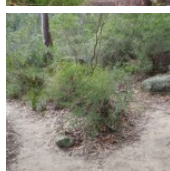
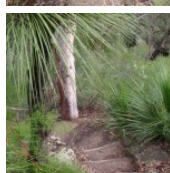
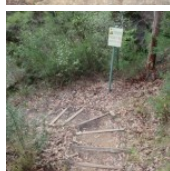
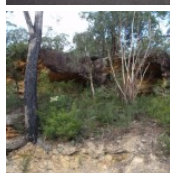
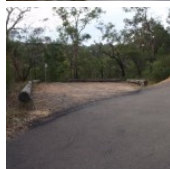
Blue Mountains National Park

Length: 0.5 km
Time: 20 mins
Climb: 39 m
Style: Return
Rating: Track: Hard
Where: 8.1 km WSW of Penrith
Transport: bus car



Visit www.wildwalks.com for more info

Side trips and Alternate routes mentioned in these notes are not included in the tracks overall rating, distance or time estimate. The notes only describe the side trips and Alternate routes in one direction. Allow extra time for resting and exploring areas of interest. Please ensure you and your group are well prepared and equipped for all possible hazards and delays. The authors, staff and owners of wildwalks take care in preparing these notes but will not accept responsibility for any inconvenience, loss or injury sustained by using these notes or maps. Please take care and share your experience through the website. Please check park closures, weather information and Fire Danger Rating just before leaving for your walk. Walk maybe closed during Total Fire Ban. GPS for start and end of this walk: -33.7772,150.6185



Wildwalks

Download the free [Bushwalk Australia eMag](http://bushwalk.com)

The eMagazine is produced by the community at bushwalk.com and the Wildwalks team
[Bushwalk.com](http://bushwalk.com) Australia's most active bushwalking forum - Check it out.

Happy Reading. Matt :)

Blue Pool car park to Blue Pool 0.3km 5 mins

(From S) From the car park, the walk heads away from the road, following the direction of the 'Blue Pool' sign down the bush track. The track winds down the hill and over a small footbridge, to an un-signposted intersection.

Continue straight: From the intersection, the walk heads down the hill, via many bush steps. The walk then continues, with the creek to the left of the track, to an un-signposted intersection (where another track continues along the base of the cliffs).

Continue straight: From the intersection, the walk keeps the water to the left as the track meanders below the cliffs for a very short time, to the bank of Blue Pool.

This is a 'Return' style walk - retrace your steps back to the beginning when you are ready.

A list of paper topographical maps that cover this walk

[Penrith 1:25 000 Map Series](#)

[Penrith 1:100 000 Map Series](#)

Nearby outdoor and camping stores

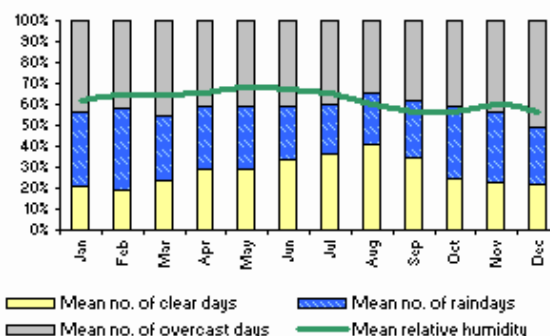
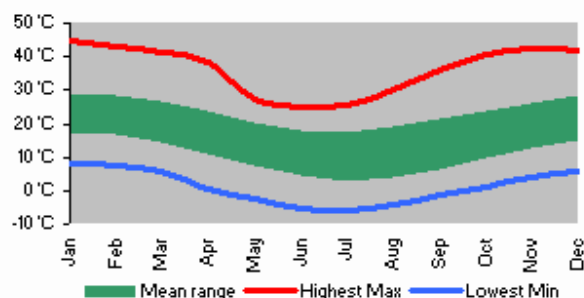
Summit Gear 11 Ross St Glenbrook (02) 4739 4373

Boots Great Outdoors Shop 25 Home Centre Wolseley St Penrith (02) 4733 5744

Kangaroo Tent City Cnr Mulgoa & Blaikie Rds Penrith (02) 4733 4111

Getaway Disposals 549 High St Penrith (02) 4732 2285

Mitchell Adventure 24 Henry St Penrith (02) 4731 8482



This space is available for advertising



Full colour
Great photos



Give the joy of walking to a friend
(and support wildwalks)

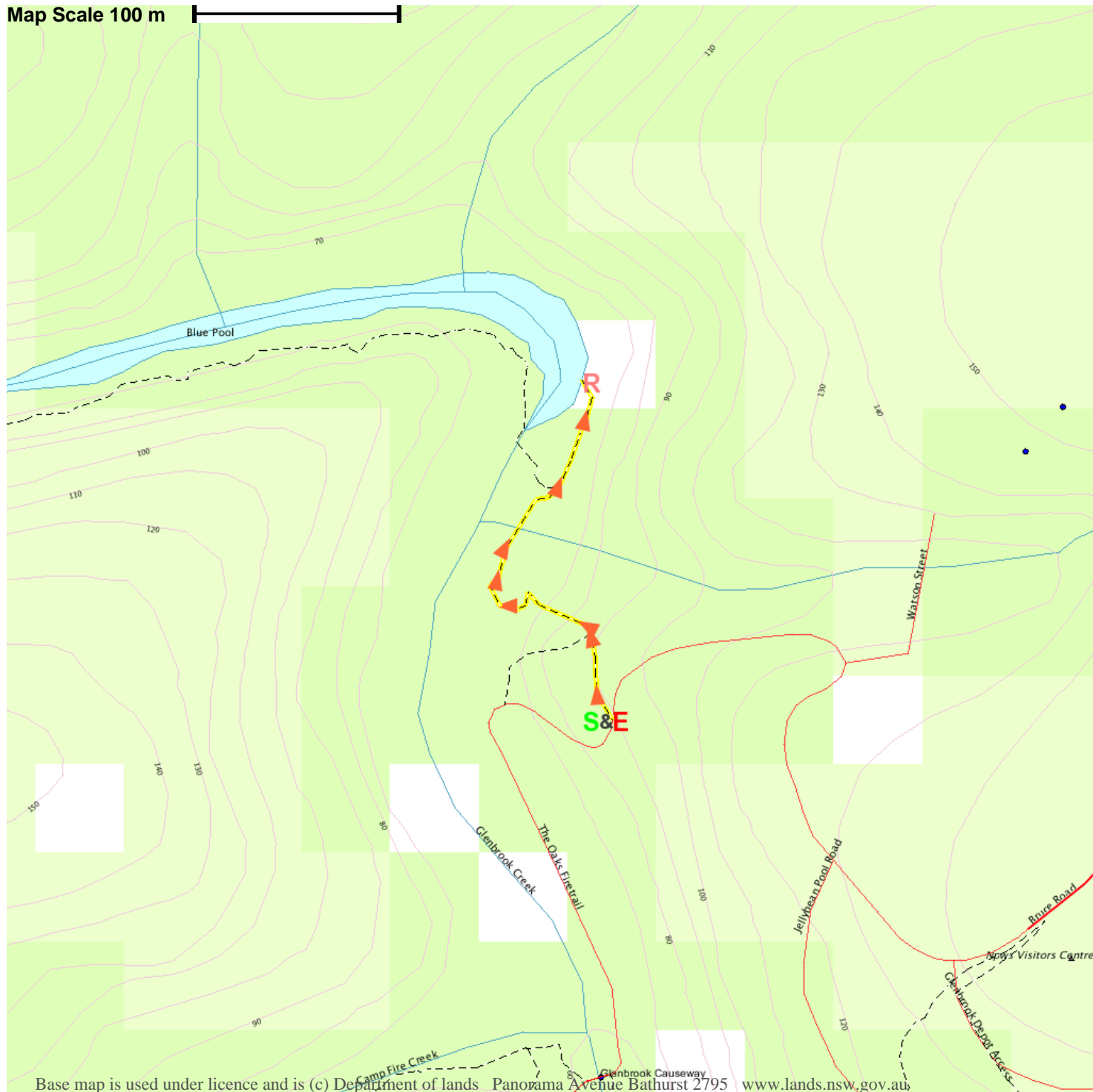
www.wildwalks.com/books.html



A walk for every body



Map Scale 100 m



Base map is used under licence and is (c) Department of lands Panorama Avenue Bathurst 2795 www.lands.nsw.gov.au

